



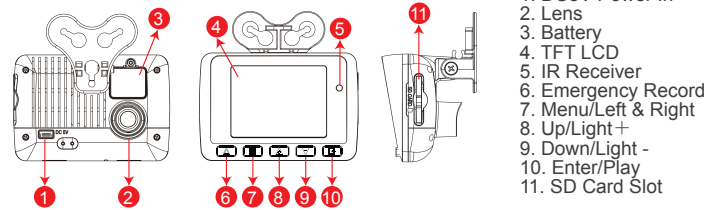
Please contact your local dealer if you have any question on this product.

Standard: Cigarette Lighter Adapter / Bracket / Monitor Mount (3M double sided tape included) / Quick User Guide / 16GB SMART CARD / CD Rom

Optional: SD Card USB Reader / IR Remote Controller

※ Specifications shall be changed subject to necessary update.

Product Diagram



LED Indicator:
Fast Blinking Red: Force recording
Red: Under normal operation-recording
Green: Low light indicator

Safety Precautions

Please Take and review some testing videos initially to make sure the images were recorded correctly.

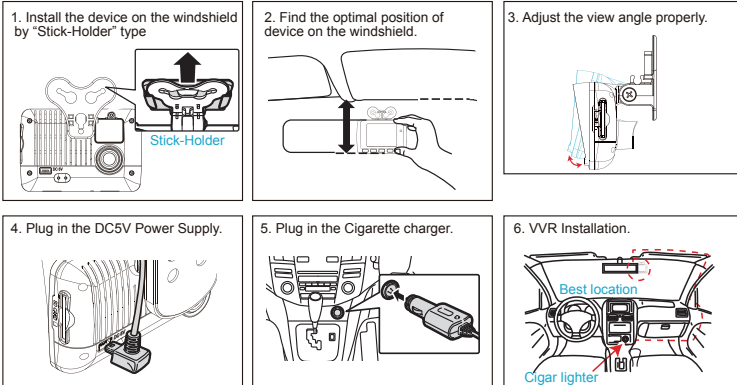
Please note that manufacturer, its subsidiaries and affiliates, and its distributors are not liable for consequential damages arising from any malfunction of main device accessory, including memory device that results in the failure of an image to be recorded or to be recorded in a way that is machine readable.

Before using the product, please ensure that you read the safety precautions described below. Always ensure that the product is used correctly.

- Use only recommended power sources.
- Do not attempt to disassemble, alter or apply heat to the product.
- DO NOT apply multi cigarette lighter adapters-Applying such devices will cause unstable power input to damage the vehicle video recorder.
- Please always make sure all power connectors are fully secured.
- Avoid dropping or subjecting the product to severe impacts.
- To avoid the risk of injury, do not touch the interior of the product if it has been dropped or otherwise damaged.
- Stop using the product immediately if it emits smoke, a strange smell, or otherwise behaves abnormally.
- Do not use organic solvents such as alcohol, benzene, or thinner to clean the product.
- Do not let the product come into contact with water (e.g. sea water) or other liquids.
- Do not allow liquids or foreign objects to enter the VVR.
- Do not place the VVR near or in direct flame.
- Do not handle the power cord with wet hands.
- Do not use the equipment in a manner that exceeds the rated capacity of the electrical outlet or wiring accessories.
- Do not use if the power cord or plug are damaged, or not fully plugged into the outlet.
- Do not allow dirt or metal objects (such as pins or keys) to contact the terminals or plug.
- Avoid using, placing or storing the product in the humid or dusty areas.

2019 JULY, V1.0
H11AN33B00

Installation Guide

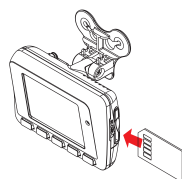


- Notice**
- This device should be installed on the windshield of clean and dry.
 - The best location must be in the range of the moving wiper.
 - Please DO NOT use memory card in the DVR prior the very first recording.
 - Set time zone and timing on OSD.

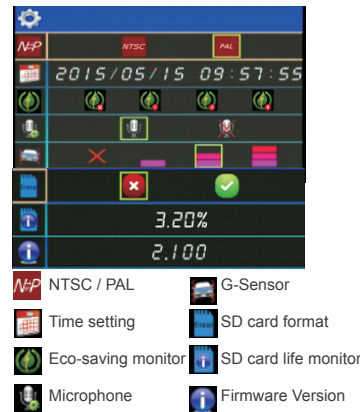
SD Card Installation

Warning

- Recommended Class 10 or above 8GB at least, up to 128GB.
- If the memory card is not formatted by the player, the device will automatically erase all the data.
- Please DO NOT use micro SD card adaptor. The adaptor could cause recording stability.
- Memory card has its limit on written times. It is suggested to check SD card files with PC player Carbox player periodically.
- When the SD card life monitor index is less than 5%, the red light of the device will flash for 10 seconds, and the warning notice will be displayed for 10 seconds on screen. After 10 seconds, it will return to the normal status. When the SD card life monitor index is 0%, the light of the device keeps flashing, and the screen displays the warning notice continuously.
- The SD card may be not compatible to the device due to changes or adjustments in the manufacturing's process. This device cannot guarantee compatibility with all SD cards which are available in the markets. If there is a possible SD card compatibility problem, please replace the model or brand of SD card.
- In the event of impact and high vibration, it may cause damage to the SD card. It is recommended to check and back up important data regularly.
- When an accident happens, please remove the memory card from the device immediately and set it at writing protection condition to avoid record being over written or tampering.



OSD Menu



Recording & Stop Recording

- 1. Reboot/Record**
Reboot the DVR system ready in 20 seconds. DVR starts recording.
- 2. Power Off/Stop**
It stops recording once power is off, build-in capacitor offer 3 seconds extra power to make sure file is well stored. User can remove the memory card after the indication light is off.

Warning

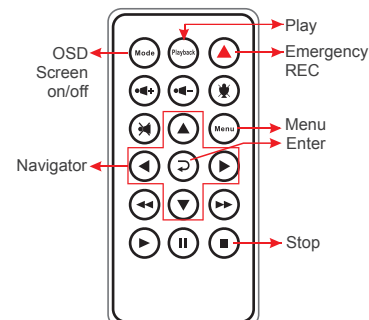
- Recording window pops up and force recording activates immediately when press emergency bottom.
- If SD card is removed or damaged during recording, machine will show blue screen and ask user to insert valid SD card. If SD card is not inserted, machine will turn into protection mode and screen will turn black. To start up machine, please insert SD card and re-powering the video recorder. (unplug and plug in the recharger)

Vacron Viewer



- *Notes:
- To do this, the software should be installed DirectX 9.0 or above.
 - Support OS: WINDOWS 7,8,10, does not support MAC OS.
 - The recommended hardware requirements: i5 above grade 3.1GHZ, RAM: 4G or more, more preferably independent display card.

Remote Controller (OPTIONAL)



- How to check if the remote controller is workable?
- ☑ Check the mercury cell is installed in correct direction. (Check the pole)
 - ☑ Check if the cell power is exhaust.
 - ☑ Check if the sensor is covered.
 - ☑ Check if it nears by Fluorescent Lamp.



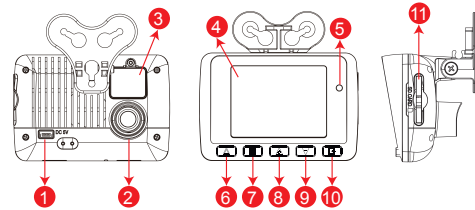
使用之前，請先查看包裝內所提供的下列物品。如您發現物品不齊全，請聯絡您購買零售商。

產品配件: 點菸頭轉5V變壓器 / 支架 / 支架座(含3M雙面膠) / 簡易操作說明書 / 16GB SMART記憶卡 / 產品光碟

選購配件: USB介面SD卡讀卡機 / 紅外線遙控器

*產品規格如有變更，恕不另行通知。

產品外觀



燈號顯示

紅色燈: 閃爍表示錄影中(強制錄影時閃爍頻率較高)。
綠色燈: 夜間微光提示按鈕位置。

1. DC5V電源輸入
2. 鏡頭
3. 萬年曆時鐘電池
4. 螢幕
5. 紅外線接收孔
6. 強制錄影鍵
7. Menu功能鍵/左右鍵
8. 向上鍵/亮度+
9. 向下鍵/亮度-
10. 確認鍵/回放鍵
11. SD卡槽

安全注意事項

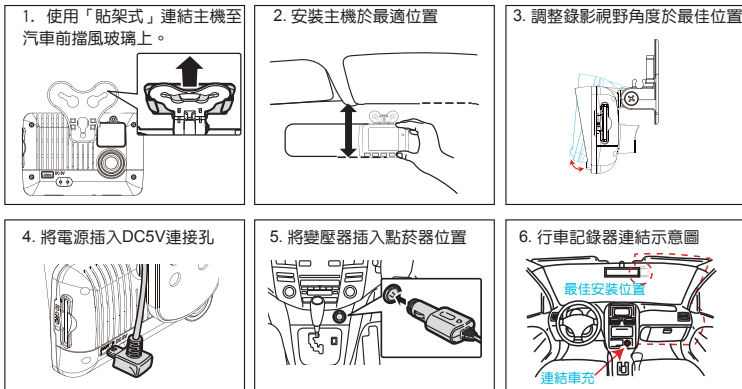
請先試錄影片，然後播放，以確定機器操作正常。請注意，如因本機配件，包括記憶卡的故障，導致不能拍攝影像或不能讀取影像格式而引起的任何損失，本公司、其附屬機構及經銷商皆不負賠償責任。

使用本產品之前，請確定您已閱讀下列的安全注意事項。並請確定您操作產品的方法是正確的。

- 請存放本器材於兒童與嬰兒無法觸碰的地方。
- 請只使用建議的電源。
- 請勿使用外接式(多孔)點菸器，避免因點菸器電壓不穩導致產品當機、失去電力而無法錄影。
- 點菸頭電源與本產品電源頭，請“務必”密合緊實。
- 請勿嘗試將產品拆開、改裝或加熱。
- 避免使產品丟落地上或受猛烈撞擊。
- 要避免受傷，請勿在產品跌下後或損毀時觸碰產品的內部。
- 如產品冒煙、發出異味或有其他異常，請立刻停止操作產品。
- 請勿使用有機溶劑，如酒精、苯或油漆稀釋劑清潔產品。
- 請勿讓產品接觸到水(如海水)或其他液體。
- 請勿讓任何液體或異物進入機器。
- 請避免端子或插頭接觸到金屬物件(如針或鑰匙)或污漬。
- 請避免在潮濕或多塵的地方使用、放置或存放產品。

2019 JULY, V1.0
H11AN33B00

汽車安裝步驟示意圖



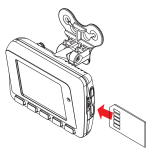
- (a) 安裝前請確認您的擋風玻璃是乾淨和乾燥的。並請安裝在平坦的玻璃上，而不是有弧度的地方。
(b) 使用車用固定架時，請慎選位置。切勿將機身放在會阻礙開車視線的位置。
(c) 機器安裝時，需安裝在雨刷可以清洗到的區域。
(d) 時間設定請在OSD設定頁調整時間，影像檔案才可以顯示正常時間。



注意事項

記憶卡安裝

注意事項



- (1) 記憶卡建議使用Class 10以上SD Card (需使用8G以上，最大可支援至128GB)。
- (2) 記憶卡若未使用過，則機器會將記憶卡進行格式化，再以機器預設值開始錄影。
- (3) 請勿使用MicroSD卡轉SD卡進行錄影，以免因震動導致轉接卡接觸不良而產生錄影異常。
- (4) 記憶卡有請寫次數與壽命問題，建議定期檢查與使用電腦播放影像，確保記憶卡仍可正常讀寫。
- (5) 當記憶卡信賴指數低於5%以下時，設備紅色燈號會快閃10秒，同時畫面顯示警告圖示10秒，10秒過後會回復正常狀態；當記憶卡信賴指數於0%時，設備燈號持續快閃，同時畫面持續顯示警告圖示。
- (6) 記憶卡可能因為廠商製程改變或調整，而出現相容性問題，本設備無法保證可以相容所有市售記憶卡。若有記憶卡相容性問題建議更換型號或廠牌。
- (7) 於撞擊及與高振動時，有可能會導致記憶卡磁區物理性損毀，導致播放斷斷續續或無法撥放問題，建議定期檢查與備份重要資料。
- (8) 當發生事故時，請將記憶卡取出並設定為防寫狀態，避免資料被修改或被覆寫。

OSD 選單



- NTSC / PAL
- G-Sensor
- 萬年曆
- 記憶卡格式化
- 螢幕節能
- 記憶卡信賴指數
- 麥克風關閉
- 版本顯示

錄影及停止錄影

1. 開機/錄影
電源啟動，並等待約20秒鐘後，即開機完成，即表示開始錄影。
2. 關機/停止錄影
電源關閉，即為停止錄影，此時間內建金電容會延遲斷電約3秒供完整結構，待按鍵燈熄滅後即可取下記憶卡讀取所攝錄之檔案。

注意事項

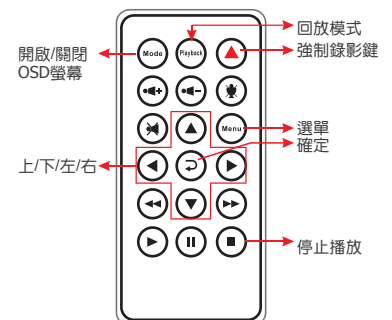
- (1) 開機畫面與即時檢視畫面呈現方式，可能因軟體更新或改版而有所改變，恕不另行通知
- (2) 強制錄影鍵有強制性，在任何狀態下觸發強制錄影鍵皆會跳回錄影畫面啟動強制錄影。

VACRON 播放器



- *注意事項:
(a) 要執行此軟體須安裝 Direct X 9.0 以上。
(b) 支援作業系統: WINDOWS 7、8、10，不支援 MAC OS。
(c) 建議的硬體需求: i5以上等級 3.1GHZ，RAM:4G以上、有獨立顯示卡更佳。

遙控器 (選配)



遙控器異常檢查

- ☑ 檢查電池的正負極性
- ☑ 檢查電池電量是否用完
- ☑ 檢查遙控感測器是否被遮住
- ☑ 檢查附近是否有螢光燈正在使用