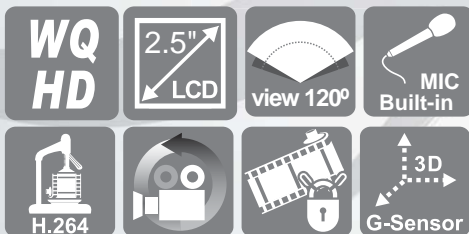


# WQHD Enhanced Night Vision Ultra-wide-angle Lens

Car Camcorder



**NEW** 2014 DEC V1.0



## VVG-CBN33

- WQHD ultra-high resolution up to 2560x1440.
- 2.5" TFT LCD.
- Loop recording on start recording.
- Emergency recording, file save to separate area to prevent overwritten.
- Built-in G-Sensor, auto recording accident footage.
- Start recording automatically when power up, extensional 3 seconds recording after power off.
- Zoom IN/OUT by mouse wheel on Carbox player.
- Enhanced night view capacity to offer clear image even when under low-light environment.

# WQHD Car Camcorder

## VVG-CBN33

WQHD ultra-high resolution



2.5 inches tiny-handly model records video without interfere the driver's actions.



G-sensor sensitivity can be adjusted according to road situations.

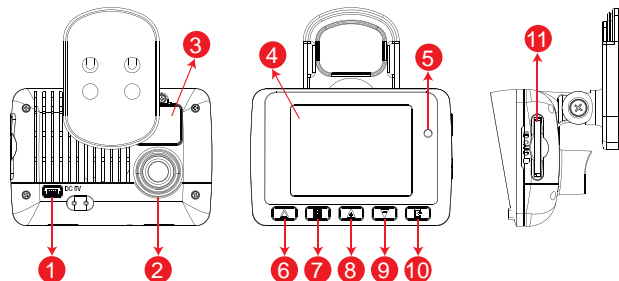


### Specifications

Item	Description
Sensor	CMOS Sensor
View Angle	120° Wide-angle
Resolution	NTSC 2560x1440(4M) 15 fps
Power Supply	DC5V±5% / 1 Amp. Built-in super capacitor to backup power
Operating Tmp.	-10°C~ +60°C
Storage	SDHC UHS-I Card Recommended SanDisk Class 10 or above 4GB at least, up to 128GB.
Recording	Prompt recording when power on Delay 3 seconds after power shutdown
Recording Data	Date/Time/Video/Audio/G-Sensor
Audio Input	Built-in microphone
Time Setting	Built-in permanent calendar with adjustable
G-Sensor	Built-in 3D G-Sensor
IR Remote Controller	Yes (optional)

NOTE 1. Version updating is not going to inform, please check the on-going updating information  
2. **Class 10 or above SDHC UHS-I Card.** (optional)

### Structure of Product



- |                  |                      |                  |
|------------------|----------------------|------------------|
| 1. DC5V Power In | 5. IR Receiver       | 9. Down/Light -  |
| 2. Lens          | 6. Emergency Record  | 10. Enter/Play   |
| 3. Battery       | 7. Menu/Left & Right | 11. SD Card Slot |
| 4. TFT LCD       | 8. Up/Light +        |                  |

■ DISTRIBUTED BY

