



4CH 1080P Mobile DVR

Vehicle Surveillance System



VVH-MD42D VVH-MD42D-3GA

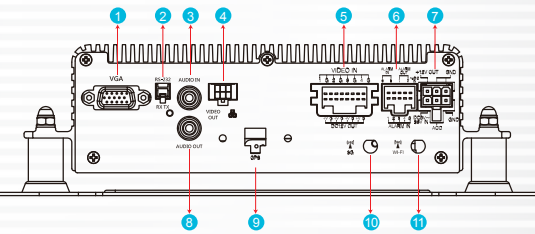


OPTIONAL

1. Support 4CH recording cameras at the same time to record driving images completely.
2. Wide range of power input 8V~36V, suitable for any kinds of vehicles.
3. Auto recording after power supplied.
4. H.264 real time compression chip, Higher compression ratio and keep clear resolution.
5. Recording format: 1080P、720P、960H、D1、CIF, used for different demand.
6. VGA and AV terminal video output to connect from the mobile DVR to an LCD monitor for on-site operation.
7. x6 alarm input, x2 alarm output, x2 Audio input and x1 Audio output.
8. Built-in G-sensor, automatically detect crush, trig force recording.
9. Optional WIFI and 3G network, different selection of connecting.
10. Complete Video Record List. Overall quick search event log.
11. Completely record driving video and sound to make sure attribution of responsibility when accident occurred.
12. Provide AVI convert function to users playback on PC.
13. Power management function, Extended record after power off.
14. G-Mouse optional, completely record your driving position and speed.
15. 3G/4G module optional, control driving situation of vehicles anytime. (VVH-MD42D-3GA)

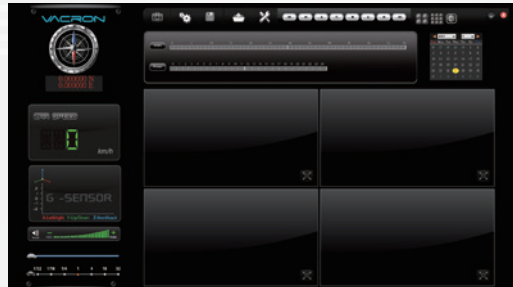
4CH 1080P Mobile DVR Vehicle Surveillance System VH-MD42D / VH-MD42D-3GA

REAR PANEL



1. VGA
2. RS-232
3. Audio input
4. Video out / Network
5. Video in(1~4ch)
6. x6 alarm in, x2 alarm out, Audio input
7. Power input
8. Audio in
9. GPS (optional G-Mouse)
10. 3G/4G (optional)
11. Wi-Fi (optional)

VACRON PLAYER



SPECIFICATIONS

Video Format	NTSC / PAL		
OS	Embedded Linux		
Video Input	4 Cameras		
Camera Power Output	4 Power, 12V / 400mA		
Video Output	x1 Video Output (optional VGA or CVBS)		
Audio Input	x2 Audio Input		
Audio Output	x1 Audio Output		
Alarm I/O	x6 Alarm Input ; x2 Alarm Output		
Operation Interface	GUI		
Language	English/ Traditional Chinese/ Simplified Chinese		
Display	NTSC	240 Fps	
	PAL	200 Fps	
Recording Frame	NTSC	4CH 1080P/720P @30FPS/CH	
	PAL	4CH 1080P/720P @30FPS/CH	
Display Mode	1ch / 4ch / 9ch		
Simplex Mode	Record / Playback		
Resolution	Display	CVBS	NTSC 960 x 480 / PAL 960 x 576
		VGA	800 x 600
Recording	NTSC		1920 x 1080@1080P
			1280 x 720@720P
			960 x 480@960H 720 x 480@D1
	PAL		1920 x 1080@1080P
			1280 x 720@720P
			960 x 576@960H 720 x 576@D1
Storage	2.5" Removable SATA Hdd / SD Card		
Backup Device	Usb 2.0 Flash Driver · 2.5" SATA Removable Hdd		
Playback	Mode	Time / Date, Events	
	Full Screen	Yes	
Led Indicator	4 Led (LAN · REC · GPS · POWER)		
Signal Loss Detector	Yes		
Buzzer Alarm Output	Yes		
RS232	Yes		
GPS	Yes (Optional G-mouse)		
G-sensor	Yes		
3G/4G	Yes (Optional VH-MD82D-3GA)		
WiFi	Yes (Optional)		
IR Remoter	Yes		
Watchdog	Stop, Automatically Return To Recording Mode When Power Back.		
Power Supply	(1) DC 8V~36V		
	(2) Acc Extended Recording By Setting Software.		
Dimension	250mm x 174.8mm x 69.5mm		
Operate Temperature	-20°c~65°c		
Weight	1.85kg (With Bracket And HDD)		

★ Version updating is not going to inform, please check the on-going updating information

Vehicle Tracking Management System

3G operating management system



Application Guide

