

2021

Mobile surveillance



We offer total solutions
in surveillance system.

- Professional Driving recorder
- Cameras
- Motorbike DVR
- Dash Camera
- Rear View Camera
- Cloud Service
- Project application



VVH-MD88DA 8CH

MDVR

Compatible Wide Range Power Input from 8V to 50V
Automatic recording after activate device.



*Customized model, photo for reference only

Upgrade

H.265 Compression

50%

Save half bandwidth
Save half bitrate

Save half Storage

Double the data compression ratio at the same level of video quality

50%

100%

Improved Video Resolution

Substantially improved video quality at the same bit rate

Complete compatible realizability

H.264
H.265

Advanced driver-assistance systems (ADAS)

Pedestrian detection(PD) 、 Forward Collision Warnings (FCW)
Adaptive Cruise Control (ACC) 、 Lane departure warning (LDW)

Driver Status Monitor (DSM)

Driver calling detection alarm. Driver smoking detection alarm.
Driver fatigue driving alarm. Driver abnormal alarm
(when there is no driver or driver does not sit at the right place)

- 4G/WIFI capability
- Support 1080P/720P/D1 compatible resolution.
- Power management system, support parking mode.
- Completely record the driving video and audio, easy searing by index file.

Built in G-sensor

G-sensor detection trigger forcedevent video, protect yourself

AV video output

Video output can connect with external monitor for live view and playback

New upgrade H.265 Compression

MDVR

Compatible Wide Range Power Voltage Input.
Support 4/8 vehicle camera.



4CH Advanced

VVH-MDE304-3GA

[BSMI] [FCC] [CE]

- **Recording Resolution : 1080P&720P**
- **GPS**
GPS offer vehicle' s speed, direction, and route track records.
- **Video Inputs /Output**
Support alarm input and audio input/output.
- **Power management system**
Power management system, support parking mode
- **Built in G-sensor**
G-sensor detection trigger forcedevent video, protect yourself
- **AV video output**
Video output can connect with external monitor for live view and playback
- **Built-in Supercapacitors**
Automatic keeping recoding after turn off engine , ensure recoding files write back to SD card.

8CH Advanced

VVH-MDE308-3GA

[BSMI] [FCC] [CE]

4ch Barebone



VVH-MDE43

- Recording Frame : 1080P/720P/960H
- Super Wide Range Power Input +8V up to +60V
- Built-in G Sensor & Gyro Sensor
- Bespoke System Integration by Means of ARM MCU
- Two Way Audio Live Communication Support

8ch Barebone



VVH-MDE83

- Recording Frame : 1080P/720P/960H
- Super Wide Range Power Input +8V up to +60V
- Built-in G Sensor & Gyro Sensor
- Bespoke System Integration by Means of ARM MCU
- Two Way Audio Live Communication Support

8ch High-end



VVH-MD88DA

- Recording Frame : 1080P/720P/D1
- Built-in G-sensor
- H.265 Compression
- 4G/WIFI capability
- Back up video format converter to AVI form PC viewer
- Built-in ADAS & DSM

4ch Entry level



VVH-MDE46

- Recording Frame : 1080P/720P/D1
- H.264 video compression codec.
- Built-in G-sensor.
- Built-in Supercapacitors, automatic keeping recoding after turn off engine, ensure recoding files write back to SD card
- Automatic instant video recording after startup, storage video after engineer off
- GUI Control interface.

4ch Professional

[BSMI] [FCC] [CE]



VVH-MD42D-3GA

- Recording Frame : 1080P/720P/D1
- H.264 video compression codec.
- Built-in G-sensor
- 4G/WIFI capability
- Support alarm input and audio input/output
- Wide Range Power Voltage Input

8ch Professional

[BSMI] [FCC] [CE]



VVH-MD82D-3GA

- Recording Frame : 1080P/720P/D1
- H.264 video compression codec.
- Built-in G-sensor
- 4G/WIFI capability
- Support alarm input and audio input/output
- Wide Range Power Voltage Input



Smart AI Dash Cam

VVM-CBE63

3 Axis G-Sensor & Gyro Sensor Built in

[Catering MTK Profile 64-bit Quad-Core CPU]

RAM&ROM Speed Loading 100% Data Relayed Driver Monitoring System

With VACRON's multi-functional system, the image and information can be managed on the cloud. It can be operated from a phone APP, computer webpage, or software system. Perfectly paired with AI calculations and two-way intercom to avoid safety concerns by yielding more effective management personnel and DSM driving monitoring system.

Face ID Competence of accurate & accessible workforce Control



- 3G/4G/BlueTooth/WiFi Wireless Communications
- Support a variety of camera models.
- GPS & BDS Dual Global Position System
- Microphone & Speaker Built in

Support one external camera (2CH) that can deploy to anywhere inside the vehicle .



(Forward Facing 125°)



(Detachable and interchangeable external camera)





VVM-CBE63

- Forward Facing 125° / In Car 90°
- 3 Axis G-Sensor & Gyro Sensor Built in
- Microphone & Speaker Built in
- GPS & BDS Dual Global Position System
- 3G/4G/BlueTooth/WiFi Wireless Communications



VVG-CBN11

- 720P
- H264 Compression
- Automatic instant video recording after startup, storage video after engine off
- Video and Audio recorded synchronize inside and outside of the car.
- Built in G-Sensor



VVG-CBN11A

- View angle 100 degree, Auto IRIS
- Low Lux and great HDR sensor
- High low Temperature durability casing
- Manually recording to save important data
- HD resolution



VVG-CBN37(G)

- 1080P SONY CMOS
- Video and Audio recorded synchronize inside and outside of the car.
- Built-in Supercapacitors, automatic keeping recording after turn off engine, ensure recording files write back to SD card
- Multi-External camera optional
- Built in G-sensor, trigger impact emergency event and record



VVG-CBN33B

- 120° View Angle
- H264 Compression
- Video and Audio recorded synchronize inside and outside of the car.
- Automatic instant video recording after startup, manual event record
- Built in G-sensor, trigger impact emergency event and record



VVG-CBN39(G)

- 1080P SONY CMOS
- Video and Audio recorded synchronize inside and outside of the car.
- Built-in Supercapacitors, automatic keeping recording after turn off engine, ensure recording files write back to SD card
- Multi-External camera optional
- Built in G-sensor, trigger impact emergency event and record



VVG-CBE07D

- Front view angle 120 degree, Rear view angle 130 degree
- Video and Audio recorded synchronize inside and outside of the car.
- Specific format without explosion issue
- Route record
- Built in G-sensor, trigger impact emergency event and record



VVG-CBE15A

- 120° View Angle
- H264 Compression
- Video and Audio recorded synchronize inside and outside of the car.
- Automatic instant video recording after startup
- Built in G-sensor, trigger impact emergency event and record



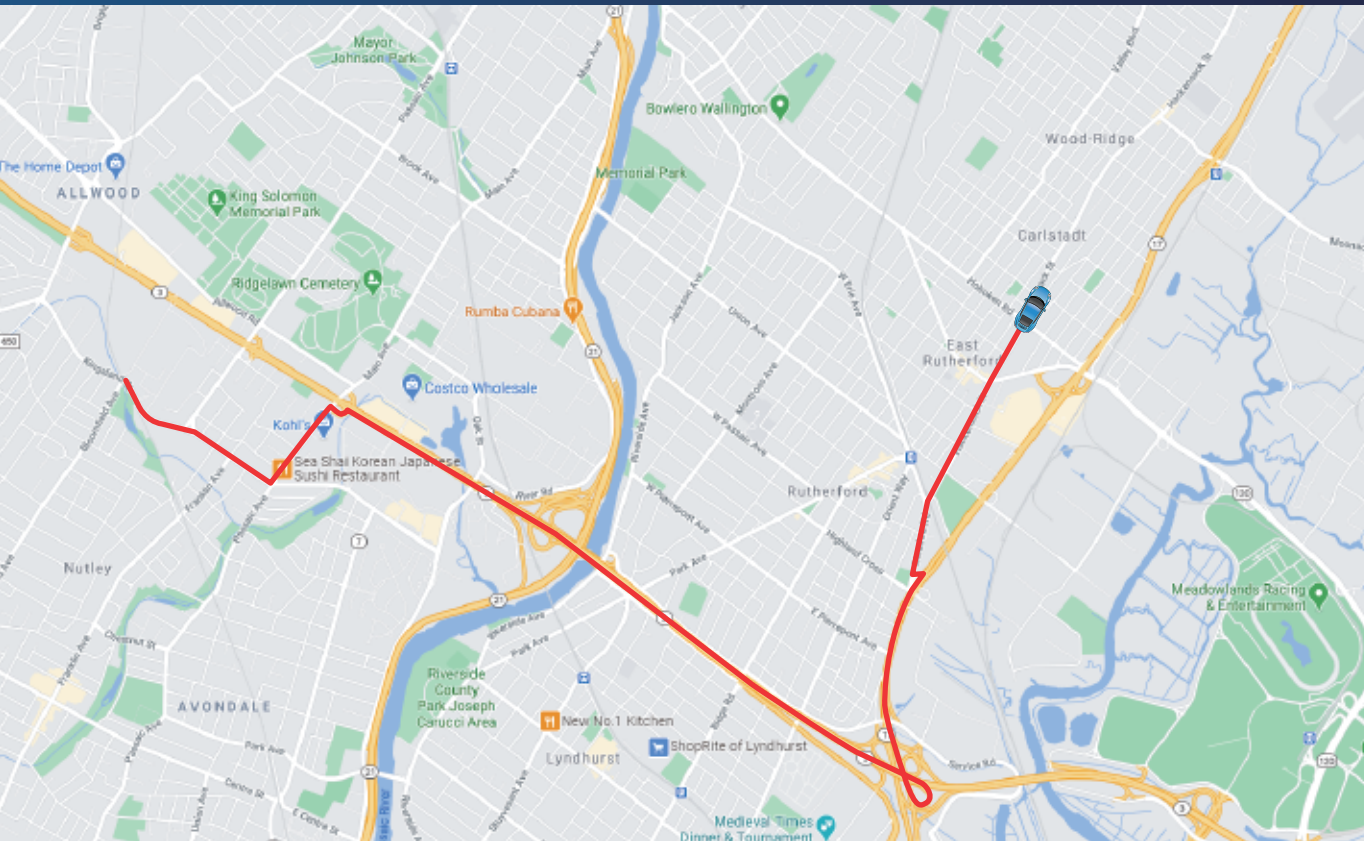
VVG-CBN11B

- View angle 100 degree, Auto IRIS
- Low Lux and great HDR sensor
- High low Temperature durability casing
- Manually recording to save important data
- "MIT" reward

**NEW
UPGRADE**

4G Wireless network and GPS location

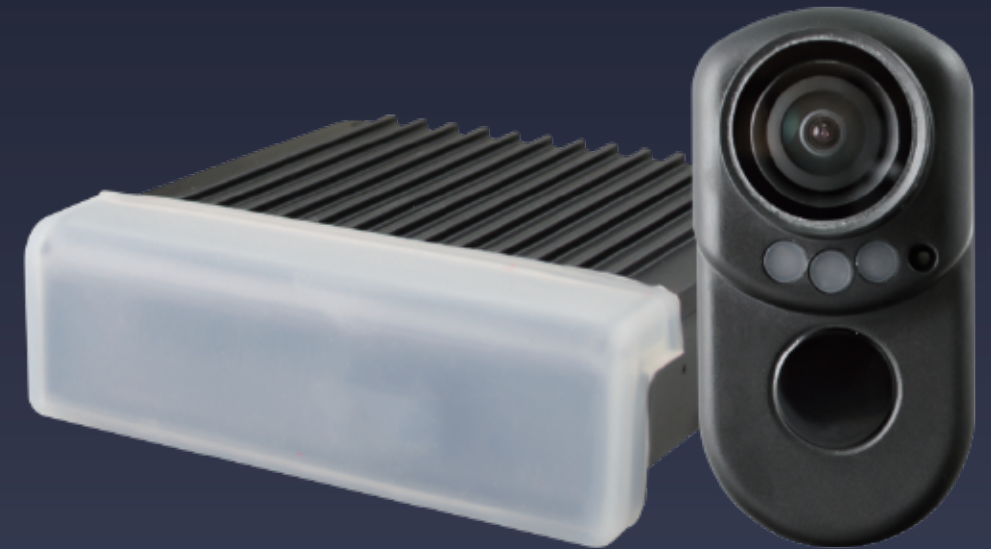
4G Wireless network connect to cloud server for remote monitoring
Built-in GPS module, for the track record of the travel route, you can click on it when playing the video.



VVG-MDE55A

Cloud Based Wearable Recorder

- Support 1080P resolution, H264 Compression
- Overwritten the normal record and keep the event file
- Built in Microphone and LED indication



140° View Angle

Simplify design × Durability

Compatible Vacron APP for cloud service 

Integration Management
One APP support all feature

Multiple monitoring devices such as driving monitoring and IPcam can be added at the same time

Mobile phone operation
Fast searching by video index

Video Images can be retained for several days without removing the memory card

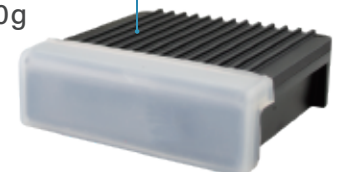
iOS Android



Multi-angle
universal lens mount
Easy installation



Simplify DVR
Dimension 80x78x26mm
Weight only 160g



IP66

(Body camera)

VVG-CB E57

Detachable



Plug and play design
Support power bank USB 5V input



Dual model support 1080P high resolution

Built in Wifi for live view, playback and backup video file.

VVG-CB E59

IP67 IP Rate

Embedded 32GB eMMC memory
The micro din connector is convenient for wiring, and the USB plug can be connected through the cable



Wearable Easy installation

IP66 New upgrade

(Camera lens)



VVG-MDE55A

- 1080P resolution
- 140° View Angle
- 4G Wireless network connect to cloud server
- Recycle record without overwritten
- Built in GPS record the route
- USB dongle

Wearable Easy installation

IP66

(Camera lens)



VVG-MDE55

- 1080P resolution
- 140° View Angle
- Based on high-capacity mobile power bank input
- Recycle record without overwritten
- USB dongle

1080P Indoor flexible Type

[FCC] [CE]



VVG-CBE57

- 110° View Angle
- H264 Compression
- Built in Microphone, Sync the video and audio
- Automatic instant video recording after startup, storage video after engineer off
- Built in Wifi for live view and playback from APP

1080P Outdoor flexible Type

IP67



VVG-CBE59

- 110° View Angle
- H264 Compression
- Built in Microphone, Sync the video and audio
- Automatic instant video recording after startup, storage video after engineer off
- Built in Wifi for live view and playback from APP

Multi-Application



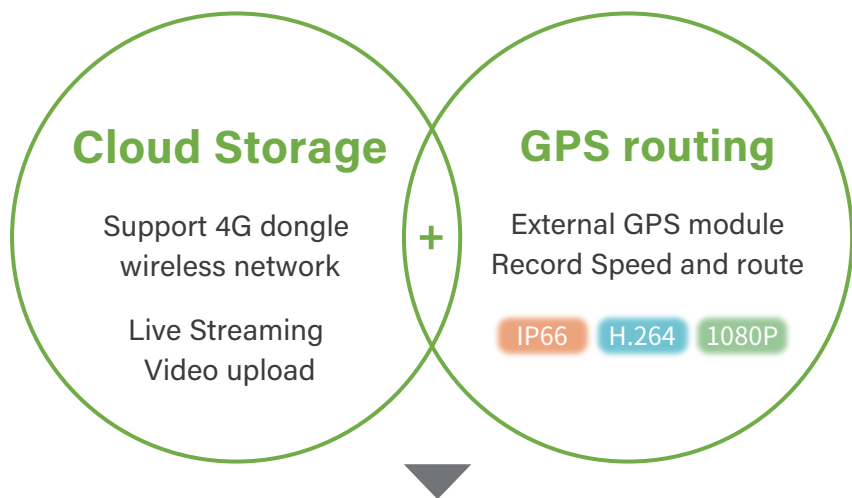
Home Surveillance



Go out to use



Vehicle and motorbike Surveillance



VVH-MDE58G

Compatibility Motorbike DVR

BSMI certificate, low voltage and high radiation

Wifi P2P. Trigger lock impact event video, Delay power off after ACC off.

Power Source directly from Vehicle.

Easy cope with various emergencies



[BSMI]

2ch



VVH-MD31D

- Resolution:4M/1080P/720P
- H.264 video compression codec.
- Built-in Supercapacitors, automatic keeping recoding after turn off engine, ensure recoding files write back to SD card
- Automatic instant video recording after startup, storage video after engineer off
- USB WiFi dongle

2ch



VACRON SV2

- Resolution:720P
- H.264 video compression codec.
- Built-in Supercapacitors, automatic keeping recoding after turn off engine, ensure recoding files write back to SD card
- Automatic instant video recording after startup, storage video after engineer off
- USB WiFi dongle

1ch [BSMI]



VVG-MDE56

- Resolution:1080P
- H.264 video compression codec.
- Built-in Supercapacitors, automatic keeping recoding after turn off engine, ensure recoding files write back to SD card
- Automatic instant video recording after startup, storage video after engineer off
- No build-in Lithium battery to prevent possible danger and heat explosion

2ch [FCC]



VVH-MDE16

- Resolution:D1
- H.264 video compression codec.
- Built-in Supercapacitors, automatic keeping recoding after turn off engine, ensure recoding files write back to SD card
- Automatic instant video recording after startup, storage video after engineer off
- USB WiFi dongle

2ch



VACRON SV1

- Resolution:D1
- H.264 video compression codec.
- Built-in Supercapacitors, automatic keeping recoding after turn off engine, ensure recoding files write back to SD card
- Automatic instant video recording after startup, storage video after engineer off
- USB WiFi dongle

2ch [FCC] [CE]



VVG-MDE50

- Resolution:720P
- H.264 video compression codec.
- Built-in Supercapacitors, automatic keeping recoding after turn off engine, ensure recoding files write back to SD card
- Automatic instant video recording after startup, storage video after engineer off
- USB WiFi dongle

1ch [BSMI] [FCC]



VVG-MDE08FH

- Resolution:1080P
- H.264 video compression codec.
- Built-in Supercapacitors, automatic keeping recoding after turn off engine, ensure recoding files write back to SD card
- Automatic instant video recording after startup, storage video after engineer off
- USB WiFi dongle

2ch [BSMI] [FCC]



VVG-MDE08B

- Resolution:720P
- H.264 video compression codec.
- Built-in Supercapacitors, automatic keeping recoding after turn off engine, ensure recoding files write back to SD card
- Automatic instant video recording after startup, storage video after engineer off
- USB WiFi dongle

SONY CMOS

4MP IP66



AVM-S525D5V

- 1/2.9" SONY CMOS Sensor
- 4.0 Mega Pixel
- Normal \ mirror image interchangeable setting
- 2.9 mm Lens

1080P IP68



AVM-S225C5V/12V

- 1/2.9" SONY CMOS Sensor
- Resolution:1080P
- Normal \ mirror image interchangeable setting
- 3.6mm/2.8mm Lens

1080P IP68



AVM-S231C5V/12V

- 1/2.9" SONY CMOS Sensor
- Resolution:1080P
- Normal \ mirror image interchangeable setting
- LEDs: 6pcs
- 2.8 mm Lens

1080P IP68



AVM-S252C5V/12V

- 1/2.9" SONY CMOS Sensor
- Resolution:1080P
- Normal \ mirror image interchangeable setting
- LEDs: 6pcs
- 2.8 mm Lens

1080P



AVM-S251C5V

- 1/2.9" SONY CMOS Sensor
- 2.6mm Lens
- Normal \ mirror image interchangeable setting
- LEDs: 6pcs

1080P IP66



VCN-5926HD512V

- 1/2.9" SONY CMOS Sensor
- 2.8mm / 3.6 mm Lens
- LEDs: 12pcs
- IR Range: 3-5 M

720P IP68



AVM-S225B12V

- 1/2.9" SONY CMOS Sensor
- 2.6 mm Lens
- Normal \ mirror image interchangeable setting

720P IP68



AVM-S231B12V

- 1/2.9" SONY CMOS Sensor
- 2.6 mm Lens
- Normal \ mirror image interchangeable setting
- LEDs: 6pcs

OTHER

1080P IP66



AVM-S265C12V

- 1/2.9" SONY CMOS Sensor
- 4.0 mm Lens
- Normal \ mirror image interchangeable setting
- LEDs: 10pcs

1080P IP67



AVM-S226C5V

- 1/2.9" SONY CMOS Sensor
- 3.3 mm Lens
- Normal \ mirror image interchangeable setting

1080P IP66



AVM-S236C5V

- 1/2.9" SONY CMOS Sensor
- 3.3 mm Lens
- Normal \ mirror image interchangeable setting

1080P IP69



AVM-S5926HD512V

- 1/2.8" SONY CMOS Sensor
- Resolution:1080P
- 2.8mm Lens

720P IP68



AVM-S252B12V

- 1/2.9" SONY CMOS Sensor
- 2.6 mm Lens
- Normal \ mirror image interchangeable setting
- LEDs: 6pcs

1080P IP67



AVM-F126C5V

- 1/2.7" CMOS Sensor
- 3.3 mm Lens
- Normal \ mirror image interchangeable setting

720P



AVM-H251B5V/12V

- 1/4" CMOS Sensor
- 2.6 mm Lens
- Normal \ mirror image interchangeable setting
- LEDs: 6pcs

720P IP68



AVM-H231B5V/12V

- 1/4" CMOS Sensor
- 2.6 mm Lens
- Normal \ mirror image interchangeable setting
- LEDs: 6pcs

720P IP68



AVM-H252B5V/12V

- 1/4" CMOS Sensor
- 2.6 mm Lens
- Normal \ mirror image interchangeable setting
- LEDs: 6pcs

720P IP68



AVM-H237B

- 1/4" CMOS Sensor
- 2.0 mm Lens
- Normal \ mirror image interchangeable setting

720P IP68



AVM-H225B

- 1/4" CMOS Sensor
- 2.0 mm Lens
- Normal \ mirror image interchangeable setting

720P IP66



AVM-H223B5V/12V

- 1/4" CMOS Sensor
- 110° View Angle
- 2.1 mm Lens
- Normal \ mirror image interchangeable setting

960H IP68



AVM-H252A5V/12V

- 1/4" CMOS Sensor
- 2.6 mm Lens
- Normal \ mirror image interchangeable setting
- LEDs: 6pcs

960H IP68



AVM-H225A

- 1/4" CMOS Sensor
- 2.0 mm Lens
- Normal \ mirror image interchangeable setting

960H IP68



AVM-H237A

- 1/4" CMOS Sensor
- 2.0 mm Lens
- Normal \ mirror image interchangeable setting

960H IP66



AVM-H231A5V/12V

- 1/4" CMOS Sensor
- 2.6 mm Lens
- Normal \ mirror image interchangeable setting
- LEDs: 6pcs

960H IP66



AVM-H223A5V/12V

- 1/4" CMOS Sensor
- 110° View Angle
- 2.1 mm Lens
- Normal \ mirror image interchangeable setting

960H IP66



AVM-H265A5V/12V

- 1/4" CMOS Sensor
- 2.6 mm Lens
- Normal \ mirror image interchangeable setting
- LEDs: 10pcs

Vacron Cloud service

Vacron Could setup and maintain without any data secured issue

“No external storage need, private cloud storage service anytime”

- Flexible storage days.
- Authorization management.
- Unable to delete image to ensure image authenticity.
- Integrate multiple device management.



User friendly interface
Web browser live view, playback and GPS route

*Cloud video compression limited, the cloud video quality will less than 1080P. Recommend user to get the raw data from storage if needed.

1 Download APP and apply the account will be active the cloud service immediately.

2 Regular maintenance ensued the secured and privacy

3 Integration All surveillance system

CMS (Central Monitoring System)

Integrate and manage the interface of different monitoring devices into one operating platform.



Artificial Intelligence (AI) Analysis

Auto-detection and early warning notification can reduce accidents and the cost.

Intelligence Recognition System Integration

Integrate with existing system data to accurately and effectively master a large amount of data.

Suitable for All Railway Transportation

High-Speed Rail · Subway · Train · MRT · Light Rail · Cable car

Various specification

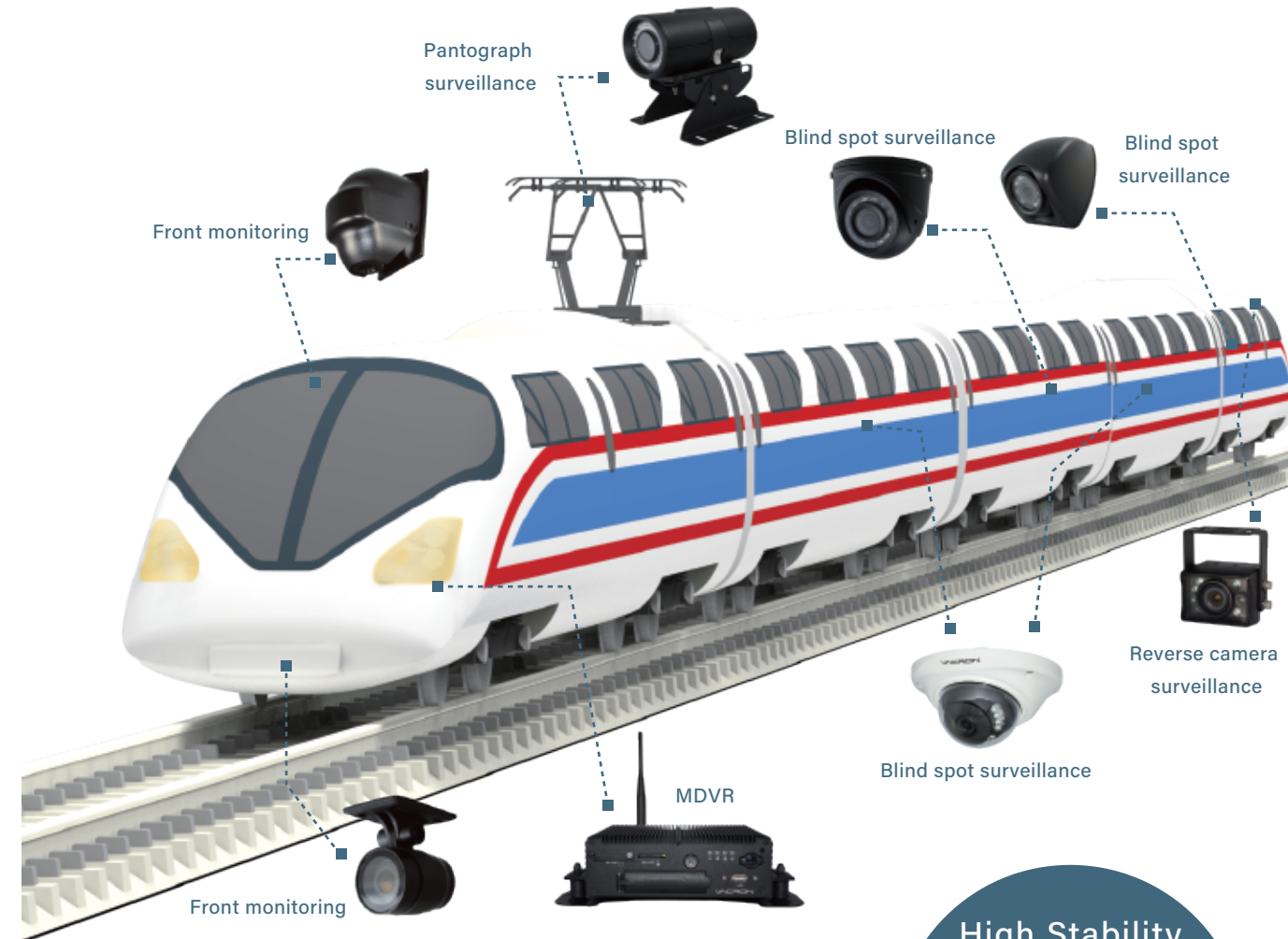
Multiple transmission methods(WIFI, 3G/4G, Network cable, Coaxial cable).
A great variety of camera specification suitable for various device location.
(IP CAM, AHD, DTV, Car)
The host device can be used with different performance and demand from 2ch to 64ch.

Multiple Installation Locations

From main part of the transportation system (Inside and outside of train cabin, train station and garage), to all moving road sections—
(Ex: Railway, railroad crossing, viaduct, tunnel etc.)
Setting up all moving and fixed-point camera sites.
(AHD, IPCam, and other railway certification cameras).

Provides Railway Certification(EN50155)

on the hardware with high stability and durability, as well as customized services on the software.



High Stability product

Vehicle DVR/3G-4G application remote monitoring management system

Vehicle tracking system, integrated GPS/GSM and GPS by wireless network for fleet management.

Crime prevention

Monitoring the carriage, protect the passenger.
Compatible 3/4G, provide the interface for passenger data exchange.

Equipment Monitoring

Live view monitoring the Pantograph and carriage.
Ensure the passenger Safety.

Driver Behavior

Driver attendance, alcohol detection.
provide management center immediately data for safety transportation.

Engineering Vehicle management

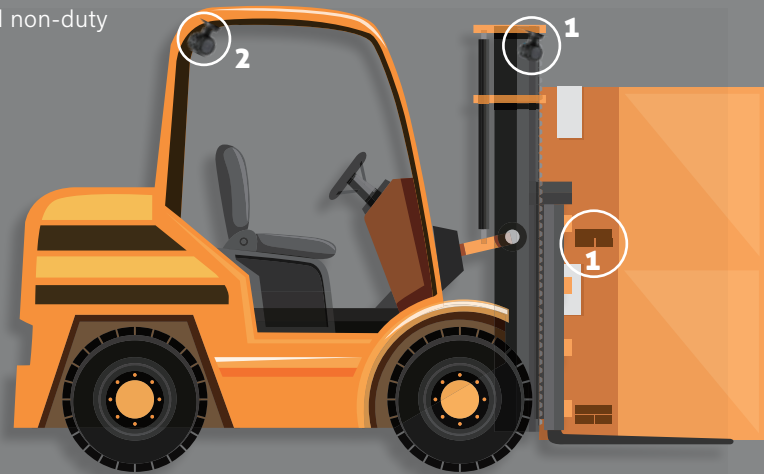
Video surveillance not only clarify accidents and internal education, but also reduce the cost of owners and effectively prevent injuries.

2

The rear camera is installed on the side of the driver. Video capture drivers, through images to correct improper work behavior and accountability, to avoid non-duty personnel driving.

1

Front camera on Forklift front view
The image is shot from back to front to check the actual operating status of the forklift. General surveillance cameras have blind spots in shooting, and the detailed codes of the goods cannot be intercepted. he goods can be captured through the forklift camera, and dispatch records or codes can be tracked.



* This photo is for reference only.

Police Rescue Fleet management

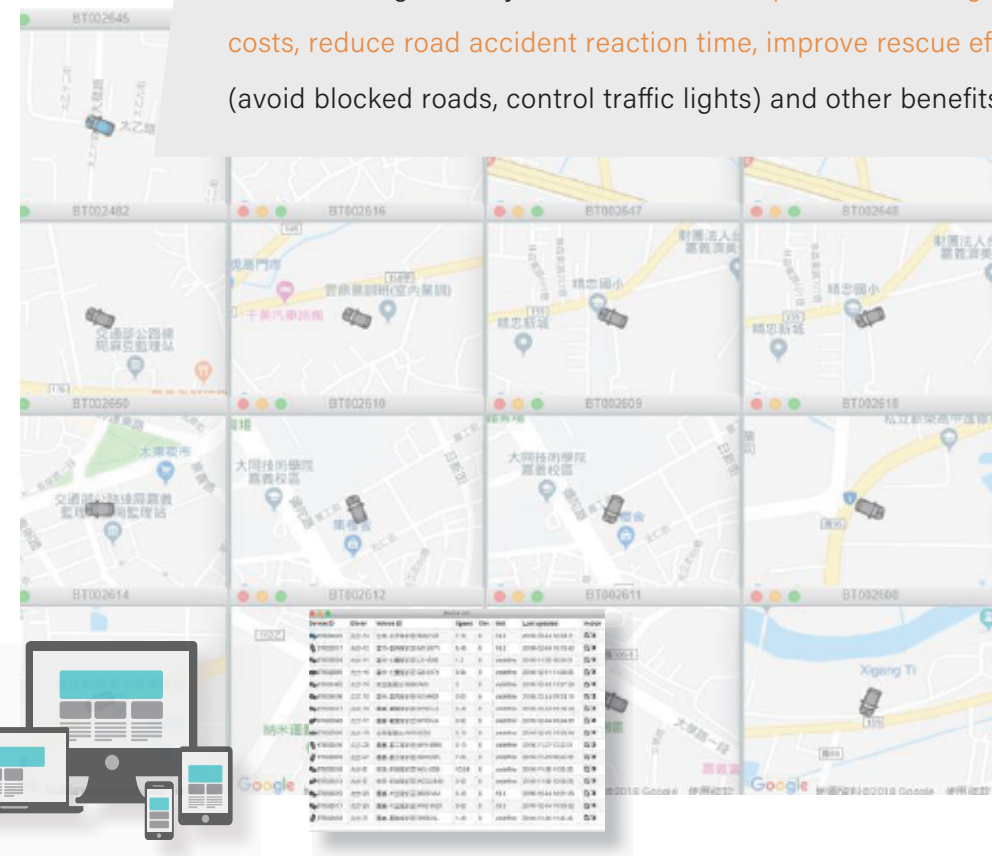
The work of police and ambulance counts every second, efficiency is everything. Smart fleet management, Rescue operations can maximize the benefits per minute.

- 1 Report, detect and judge
- 2 Streaming video
- 3 Quick dispatch

Fleet integration

Providing immediate rescue and avoiding re-injury is the goal repeatedly pursued by the police rescue team.

The fleet integration system can **save transportation management costs, reduce road accident reaction time, improve rescue efficiency** (avoid blocked roads, control traffic lights) and other benefits.



Application Area

Dispatch centers, factories, warehouses, stations, Sea ports, airports and other places, and can enter the warehouse, carriages and containers.

Engineering vehicles carry out loading, unloading and stacking operations on finished products, packages, pallets, containers and other containers, which are indispensable equipment for pallet container transportation.

Feature

- Suitable for all kinds of oil-electric engineering vehicles
- Camera and DVR support IP66 rate
- Operation temperature -25°C to 70°C
- Wide voltage range-with engineering vehicle voltage (DC-DC power box)
- G-sensor sensing device-when an impact is detected, the trigger will be written on the event video
- Live streaming monitoring to video web cloud platform

High Performance Imaging System. Simple, Stable and Reliable

It accommodates various monitoring equipment, and manages more than 5000 cameras at the same time, integrates different management interfaces on the same platform. It is equipped with various remote monitoring, video playback which allows the manager to operate conveniently.

Compatible with System Integration Image integration functions

17 computer supports more than 200 devices with 1600 cameras connected. (Support up to 5000 cameras)



Equipped with various of system

Equipped with Car Plate Number / Face Recognition

Support H.265

Support High Definition Quality Performance Cameras

Web Interface Operation

Two-way Audio

LINUX Operation System

Remote Playback

Continuous video uploading

SD card Storage Endurance

Support Web Browsers to live viewing.

The web browsers do not need to be installed, the plug-in software plays the video directly.

Less than 0.5 second in video latency.

Support PTZ protocol

Support video recover resuming, video scheduling resuming, and time interval resuming.

Auto upload images where it was left off when the network is reconnected to ensure that all the image upload is not missing.

Security Permission

GM SERVER mini PC



Support Devices	Max. 40 devices
Record Mode	Normal record/Event record
Network Protocol	Ipv4 / ARP / TCP / UDP / ICMP / HTTP
System Management	Able to use Chrome to do the setting / remote playback/live view
	Account management

Vacron Provides Multiple Video Surveillance Integration.

smart surveillance

Redefine surveillance image management software
Rapid hardware iteration, and selectable according to your needs.

Smart Guarder Management System



24hrs automatic monitoring and identification notification

Smart store

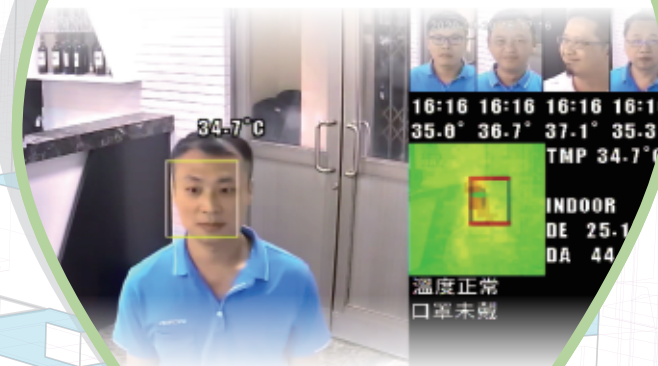
Face recognition system



Let home, company, and more peace of mind

Smart School

Temperature measurement



AI Intelligent temperature sensing HD camera.

Smart community

Smart enterprise