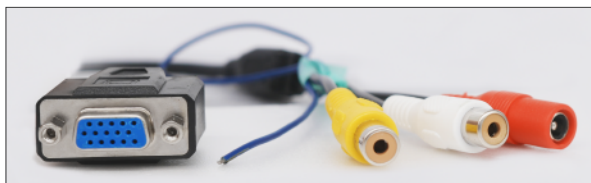


# VVP-CM206

## LCD monitor



### Warning:

1. Looking at the screen too close for an extended period of time can deteriorate your eyesight.
2. After every 30 minutes eye usage, rest for 10 minutes
3. Children under 2 years of age should not watch any Monitor. Children over 2 may watch Monitor for 1 hour daily.

\* To avoid electromagnetic interference, please apply a powdered iron core about 3 cm close to the product end of the VGA wire, and round the composite video connector wire at the powdered iron core about 2 cm close to the product end.

## SPECIFICATIONS

---

<b>Monitor Dimension-</b>	7 inches
<b>Resolution-</b>	1024x600
<b>Color system-</b>	PAL/NTSC
<b>Power voltage-</b>	DC 9V-35V

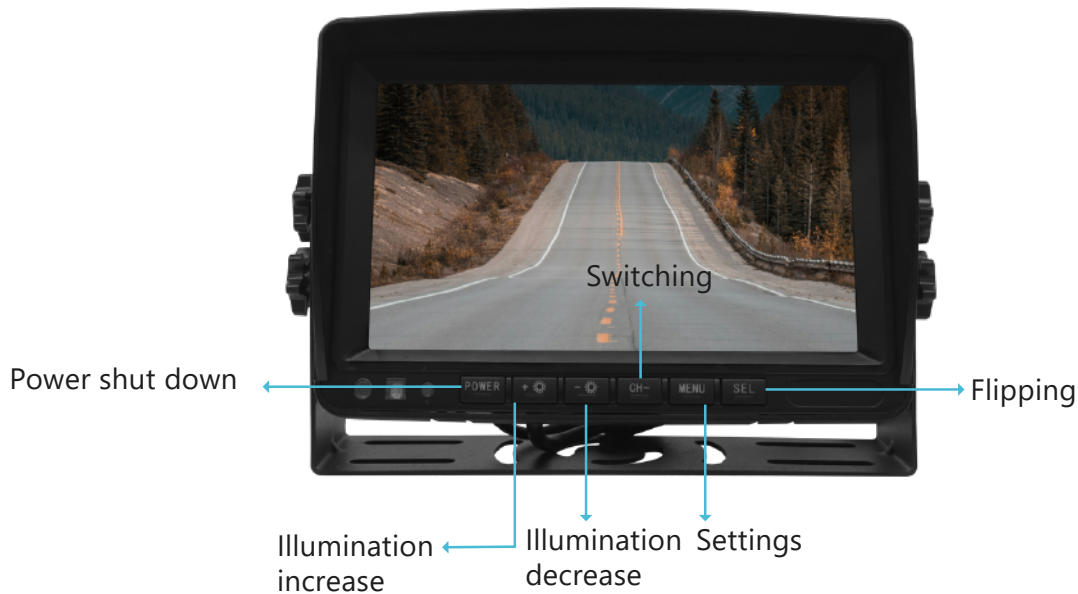
---

<b>illumination-</b>	600cd/m2
<b>Contrast-</b>	500:1
<b>Power consumption-</b>	>4W
<b>Operating Temperature-</b>	-30°C~ +70°C
<b>Function-</b>	2CH Video output, 1 CH VGA input
<b>Dimensions-</b>	185mm × 135mm × 60mm
<b>Weight-</b>	0.45 kg

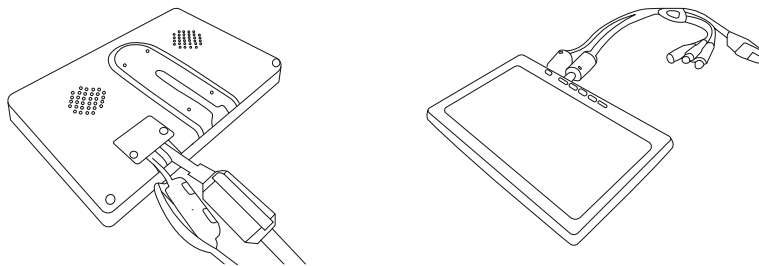
---

Version updating is not going to inform, please check the on-going updating information

## Buttons Instruction

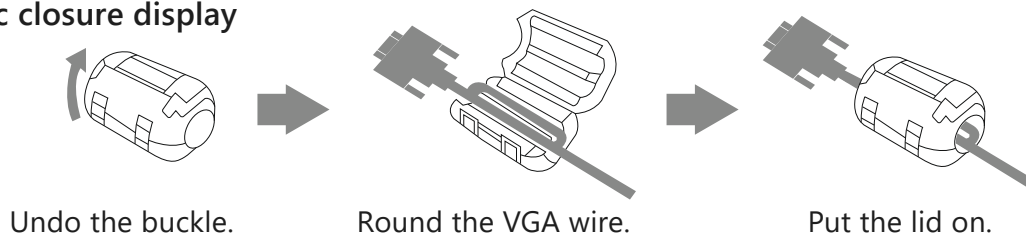


## Wire instruction



To avoid electromagnetic interference, please apply a powdered iron core about 3 cm close to the product end of the VGA wire, and round the composite video connector wire at the powdered iron core.

### • Magnetic closure display



Undo the buckle.

Round the VGA wire.

Put the lid on.

Version updating is not going to inform, please check the on-going updating information