

Vehicle Video Recorder



Accessories

Before use, check the package offered by the following items. If you find that items are not complete, please contact your retailer to purchase.

Standard

- (a) 5V cigarette Power adapter
 - (b) 4 pins, 3.5 inch headphone jack to RCA output cable
 - (c) WiFi USB Dongle(Install to device)
 - (d) Remote control
 - (e) Bracket holder
 - (f) Suction cup bracket
 - (g) Product CD
 - (h) Quick Guide
- ※ Memory cards are not include.
8G Class10 above MicroSD
(8GB/16GB/32GB/64GB)

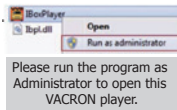
H11A0E3602

Recorder initial setting

Before using the recorder, please read this chapter and operate in accordance with steps to make sure you use the best driving recorder.

Step 1 Memory card format

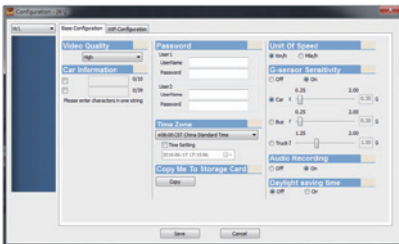
- (1). When you use the Micro SD card for the first time or just purchase a new card, please using VACRON player to format SD Card first.
 - (2). You can find the VACRON player in CD, or visit VACRON website to download it.
 - (3). Please run the program as Administrator to open this VACRON player.
 - (4). Open player and click on 「Toolbar」 , to format SD Card.
- Detailed steps, refer to < Formatting Memory Card > section explains.



Please run the program as Administrator to open this VACRON player.

Step 2 Memory card recording the initial value setting

- (1). Open VACRON player and click on 「Configuration」 , to initial setting data. Detailed settings, please refer to <Memory card configuration> section explains.



1. Video Memory Card data - basic settings
Video Quality / Car Information / Password / Copy to SD Card / Unit Of Speed / G-sensor Sensitivity / Audio Recording / Daylight Saving Time.

2. Memory card recorder -WiFi setting
SSID / Password.

If data is set, please press "Save" button, the setting data stored in the memory card. And inserted back in the recorder, complete video recorder host basic settings and WiFi settings.

* Notes:
WiFi Wireless card to do in the factory setting driver, do not arbitrarily remove or change settings on the computer to do other, so as to avoid abnormal connection.

Step 3 Memory Installation

Please note that the memory card before inserting the memory card is inserted, refer to <Memory card installation> section explains.

Step 4 Recorder Installation

Please refer to <Cars installation guide steps> section explains.

Step 5 Recording

After recorder connect the power and start the car, it will automatically turn on and start recording. Refer to the <start and stop recording> section explains.

Notice

Please test recording and play function to make sure the device is running well. Attention, if the failure was due to device accessories included memory card out of function to lead to any loss of video recording function fail or unable to read the video type, our company ,subsidiary bodies and agency all not responsible for indemnification.

Before use the product, please sure you have read notifications as below. And please sure the way you operating the product is all correct.

- For your safety, you do not watch the video or operate this product while driving. To install and configure this product, please park the car to a safe place.
- Please do not uses the external (multiple plug) automobile cigar lighter to prevent unstable voltage crashed the device system.
- Please make sure automobile cigar lighter and the power head must be fitted.
- Do not install the product it might cause interference place.
- Please avoid to use or place or storage the device in the damp or full of dirt environment.
- Do not use this product placed in long-term direct sunlight, so as not to reduce the life of the product. Without using the product, please return the product storage at room temperature, dry environment.
- If the machine fails during use, do not disassemble, repair, please contact your local dealer.
- If the device is smoking, waft peculiar smell or any abnormal issues, please stop to operate the device.
- Please do not let any liquid or object into the device.
- Please avoid the terminal or plug to contact any metal object (ex. needle or key) or dirt.

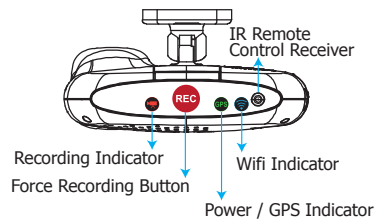
Product Upgrade

- (1) Please enter VACRON official website (www.vacron.com) to download the latest firmware. When downloading the latest software, please view the system version (if the host version of the current firmware version is higher than the official website, it is recommended not to replace the firmware).
- (2) firmware update, follow these steps:
 - The memory card in the recorder with a card reader connected to the computer.
 - Enter VACRON official website (www.vacron.com) click on "Technical Support."
 - After entering the download area, click to download the corresponding model, begin downloading the update firmware to the memory card.
 - After the download is complete, the memory card into the drive recorder.
 - The car recorder is connected to power, the machine will automatically turn on and run the upgrade program, the upgrade is complete the machine will automatically reboot.

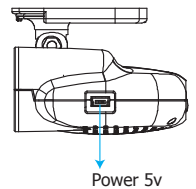
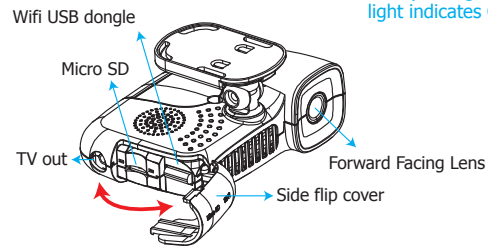
* Precautions:

Do not interrupt the upgrade process program or the power suddenly to avoid bugs so that the products can't boot or have other faults.

Structure of Product



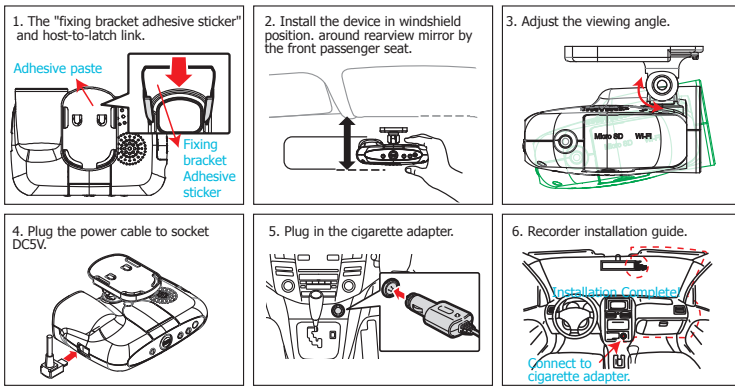
- Video light (red): Red indicator of REC, Stable flicker of red indicator: On recording
Fast flicker of red indicator: Force recording
- Green indicator of GPS positioning: Flicker of green indicator: GPS 3D positioning
Steady of green indicator: GPS 3D positioning accomplished.
- WiFi (blue light): Solid blue light indicates Connected WiFi phone.



⚠ Memory Card Precautions

- (1). Class 10 memory card is recommended above SDHC Card (need to use more than 8G)
- (2). Failure to use a dedicated memory card playback software format, then the machine will be forced to clear the entire memory card information, then the machine in order to start recording a preset value.
- (3). Do not use MicroSD turn SD card video card, so as to avoid vibration resulting in poor contact video adapter exception.
- (4). The number of memory card reader and lifetime problem, periodic inspection and the use of computers playing a video, make sure that the memory card can read and write.
- (5). Memory card because the manufacturers may change or adjustment process, and the compatibility problem occurs, the device cannot guarantee compatibility for all commercially available memory card. Memory card compatibility problems if the proposed replacement model or brand.
- (6). If no memory card first using a dedicated playback software format, then the machine will be forced to clear the entire memory card information, then the machine in order to start recording a preset value. Unformatted specific models may not allow videos.
- (7). Whether the memory card 8G, 16G, 32G or 64G, after the unit or format the player, to see the computer storage only 80MB, the rest is dark file format, you must be able to see files via player.
- (8). At the time of impact and vibration and high, it may cause the magnetic domain memory card physically damaged, resulting in choppy playback or unable problem, we recommend regular inspection and backup important material.
- (9). When an accident occurs, please remove the card and set the write-state, to avoid information being altered or overwritten. Class 10 above SDHC Card.

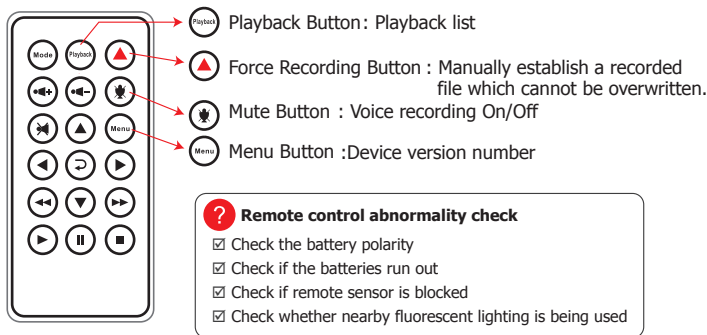
Installation Guide




Notice

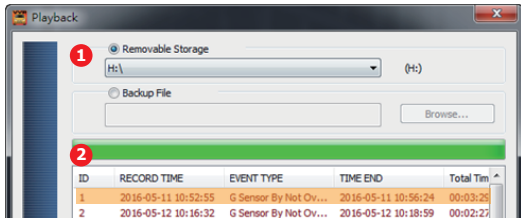
- (1) Make sure that the front install your windshield is clean and dry. And install on a flat glass, instead of having a place in radians.
- (2) When using the car holder, please carefully choose the location. Do not place the body in sight will hinder the drive position.
- (3) When the machine is installed, it can be installed in the wiper to clean the area.
- (4) The initial use of a memory card recording, first in VACRON Player configuration data to the memory card.
- (5) The initial use of a memory card recording please set the adjustment time, image files can display normal time.

Functions of Remote Controller



Video Play

Using Vacron player to playback
Click on open files , choice files to play in memory or HDDS



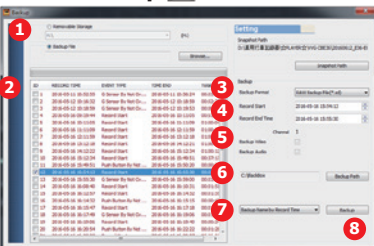
Backup

1.Quick Backup



- (1). In the movie playback, use the "backup start control flag" to mark the start backup video.
- (2). After the initial time stamp, press the "rapid backup key", That quick video backup.

2.Disk Backup



- (1). Select backup data source
- (2). Select backup recorder data
- (3). Select backup data format : original backup(*.sd) or AVI backup(*.avi)
- (4). Select backup start and end
- (5). Select backup video and voice, or backup video and voice together
- (6). Select Saved Locations, Default path C:\BlackBox
- (7). Backup file name setting mode: choose the recording time by naming or named according to the backup time
- (8). After the above description is set up, you can press the "Start Backup" button to backup.
- (9). After the movie backup is complete, you can view data in the backup box

Notes

In the original format of the backup memory card, that format will include GPS latitude and longitude, speed, G-SENSOR data and other records, *.avi format backup of the terms of the date, video and audio data, it is more recommended that the memory card in its original format backup.

VACRON Player

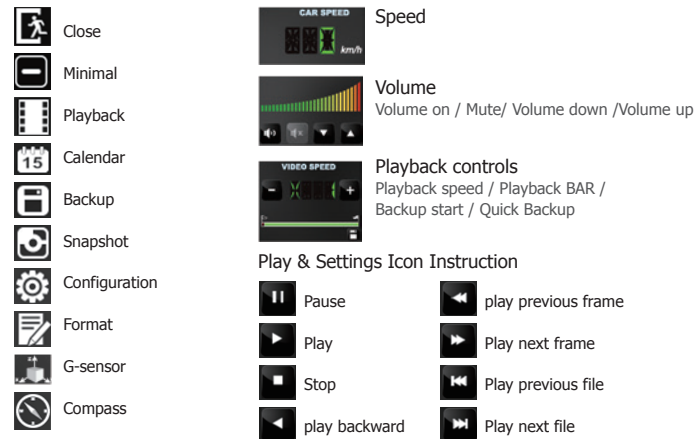
1. Player

Open the CD and install player , player as follows.

*Notes:

- (A) To do this, the software should be installed DirectX 9.0 or above.
- (B) Support OS: WINDOWS XP, VISTA, 7,8,10, does not support MAC OS
- (C) The recommended hardware requirements: i3 above grade 2.7GHZ, RAM: 4G or more, more preferably independent display card

2. Vacron player Interface



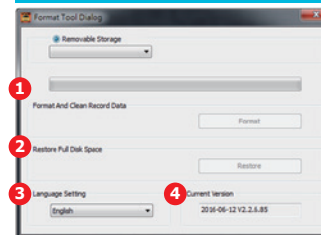
Even Calendar



Using the Vacron player, click on 「Even Calendar」, Date Event browse video files to follow the sequence of operations to date -> times -> select points.

Green point of videotaped information, mouse click the Blue point. In videotaped information using mouse to clicking two consecutive points and play video.

Toolbar operation



1. Format SD card

When the user to purchase a new memory card, or use their existing card, is required after the first card is formatted before use.

2. Restoring Memory Card

When the memory card after the video images are recorded when files have been backed up in the computer, and the memory card to be done to other storage purposes, then the card must first restore operation, only do it with !!

3. Interface Language setting

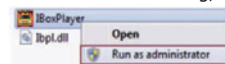
Select playback software language setting is set to be re-started after the software.

4. Version

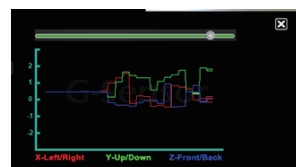
Current software version, go VACRON website to download or check it.

Notes

1. Before formatting or restoring Micro SD card, please ensure to unlock it first.
2. If the card is unlocked but still cannot be restoring, Please run the program as Administrator to restoring memory card.



3D (G-SENSOR)



Open the player and select 「3D」, That you can view the impact sensor analyzer

- X: Induction vehicle traveling in the left and right horizontal.
- Y: Induction vehicle traveling in the ups and downs.
- Z: Induction vehicle traveling in front and rear horizontal.

*Notes:

Due to some area poor road conditions, it is suggested that the gravity sensor sensitivity is set low to avoid excessive lock file, resulting in insufficient memory card space, causing the machine can't continue recording. If gravity sensor set too low, leading to excessive locked file caused by lack of memory card space, the machine can't continue recording, please use VACRON Player format cards.