

# MOBILE SURVEILLANCE

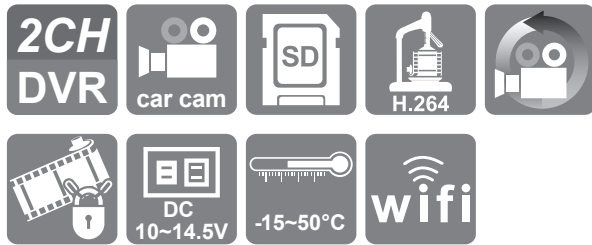
2CH H.264 Mobile DVR / Camera

## Mobile Digital Video Recorder



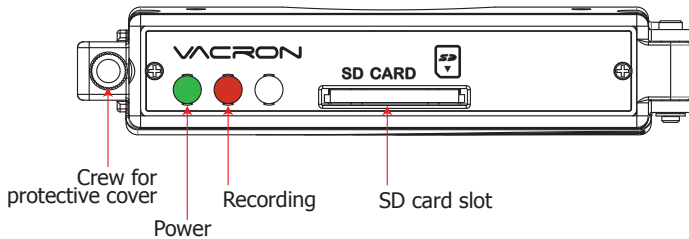
2CH DVR

Camera \*2



### Product Description

#### Vehicle device



#### Lights indicate

- Power : Green light always on is indicating device power on.
- Recording : Red light flashing represents the beginning of recording.

### Cables Installation Instructions

#### DVR Cables

- (1) Power connector
- (2) Channel 1 Video Input
- (3) Channel 2 Video Input
- (4) WiFi Dongle connector

NOTE: Use this device with compatible vehicle cameras

#### Power Cable

- (a) Power Adapter - Female connector.
- (b) Live Wire (red): Wire to the positive pole of Engine Starter. (+)
- (c) Earth Wire (Black): Wire to Negative Pole. (-)

### Accessories

Before you use our product, please make sure everything that we list below is included in this package. Contact retailers if this package missing any item.

※The memory card sold separately.

- |  |  |
|--|--|
| <ul style="list-style-type: none"> <li>■ Standard package includes</li> <li>1. Camera *2</li> <li>2. 2.5M Power cable *2</li> <li>3. Charge cable</li> <li>4. USB WIFI dongle</li> <li>5. Velcro tape</li> </ul> | <ul style="list-style-type: none"> <li>■ Optional</li> <li>8/16/32G SD memory card, Class10 or above.</li> </ul> |
|--|--|

### ! Safety Precautions

#### System Installation Cautions

- Before install system, get knowledge of charge and power cable wiring.
- The system must be installed by technicians of professional vehicle manufacturers or professional vehicle installation service.
- Place the device in a well-ventilated location inside a vehicle
- Please select the storage device following the storage device manufacturers advice, in order to meet a long time, a large amount of data read and write requirements.
- For ensure the storage devices quality, please purchase from the official channel.
- If you meet any problem during the installation, please contact technicians of dealer or authorized vendor immediately.

#### Vehicle System Cautions

- Do not let any solid or liquid seep inside the device.
- Do not disassemble this equipment, repair or replacement any component. If the machine does not work properly, please contact the manufacturers or dealer, we will solve problems as soon as possible.
- For avoiding battery leakage damage, Please remove battery from remote control when you are not plan to use remote control recently.
- Please install ground first to avoid static / lightning might broke the recorder.

#### Usage environment cautions

- Please place and use this product under the recommended temperature, avoid direct sunlight, or near heat sources.
- Do not install the machine in moist environments.
- Do not expose the machine in smoky, dusty environment
- Do not drop the machine for avoiding strong collision
- Please install this product in ventilated locations, do not block the product's vents.
- Please use this device within the rated input and output range of current and voltage.
- This device is design for electronic engineering prolonged use; do not place the device next to flammable or explosive materials. In order to avoid safety problems.

H12A0E1601

### Recording

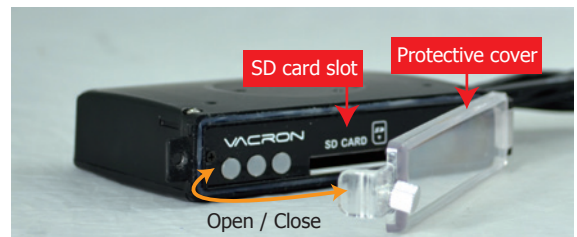
#### Power on/Recording

Power On, and wait about 30 seconds later, the boot is complete. During the recorder boot process, The PWR Green light is always on. The red light flashing represents the beginning of recording.

#### Power off/Stop recording

A delay of approximately 3 seconds after the power is turned off to stop recording, and then the system will write buffer zone back to the SD card. After the light goes out, you can remove the memory card reader of the video file.

### Memory Disk



- (1). Loose the screw in counterclockwise rotation, and open the protective cover to insert/remove SD card.
- (2). Please refer to the other sections for format / restore the memory card.

### ! Caution

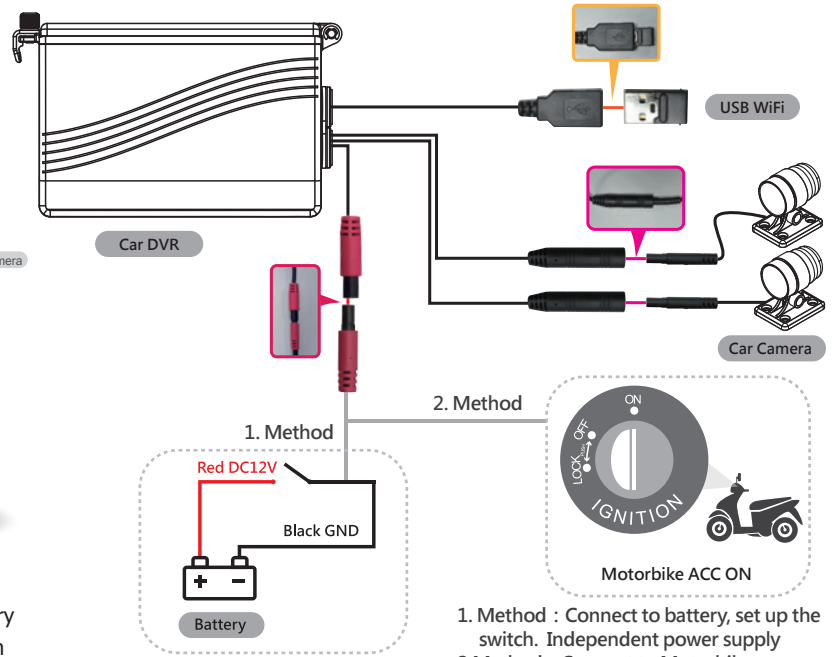
- (1) Recommend using SDHC Card, Class 10 above (8G or better)
- (2) Before using the memory disk, please format the disk first using the software player in the CD-ROM. If not, device will automatically erase all data in the memory disk before recording.
- (3) To ensure recording quality, please do not use adapter card with Micro SD card. Doing so may lead to bad connection due to shock and vibration.
- (4) All memory disks have limited lifespan. Please regularly watch videos on PC and check the memory disk to ensure proper functioning.
- (5) Strongly recommend regular inspection and backup important data. The shock and vibration can cause physically damaged to memory disk, resulting in choppy playback or data damage.

## Installation Diagram

### • Installation on motorcycle



### • DVR installation diagram



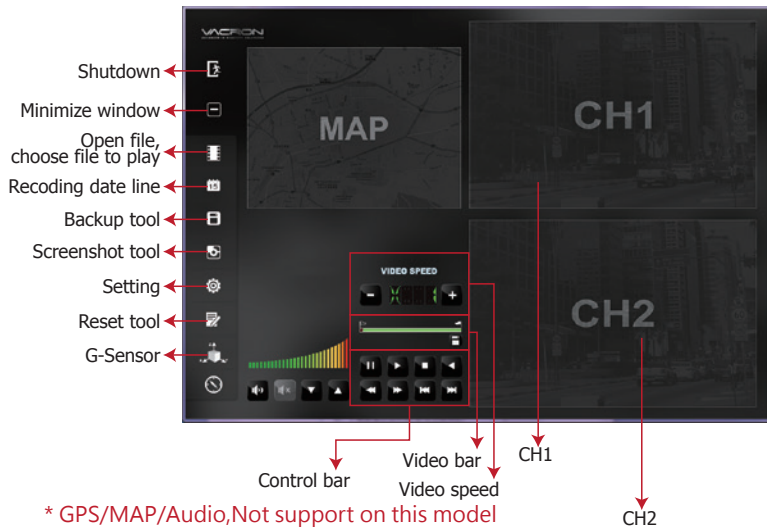
### ■ Explanation

- Please install device by professional installation engineer; temporary installation is suggest to fixed with tape included; please take high attention from damaging motor oil and power supply.
- Please keep device cabling from gasoline tube and oil tank; please install DVR when engine is off.
- Please don't use micro-SD adaptor as recording device, it may cause intermittent recording and unstable connect from driving vibration.
- Please use tape to seal connector well after cabling in order to prevent cabling loosens and dirt, oil, water from entering.
- All cabling should be installed with fuse protection.
- DVR should be fixed well to prevent moving and causes device from damages.
- GPS positioning precision is interfered by installation position and weather condition.

### ■ Attention

- Camera video and signal may be electromagnetic interfered of installing on non-EMC certified vehicles.
- Please use alcohol to clean cable connectors to eliminate dust, mud, oil, ...etc. to ensure signal transmission and video quality.
- NTSC or PAL frequency should be set according to local TV system.
- The machine consumes micro electric current when standby. If the vehicle wouldn't be used for long time, please remove DVR power to prevent power consumption to car battery. User needs to do time calibration after reconnect the DVR to car battery.
- Boot screen and OSD interface is subject to change according to software update or revision change without notice.
- Please remove the card and set to lock-state to avoid being overwritten for important event or accident records.
- Please shut off power before installing or removing cameras to protect from electric surge or short.
- DVR shuts off when ACC power is off, and DVR time setting is rely on car battery.

## Viewer Schematic Diagram



## WiFi Connection



APP Player

- Play store search "VacronPlayer" and download.
- Open WLAN then link "SSID", with password "12345678".
- Open APP "VacronPlayer", click "device list", "open new", then type any name you like.
- Click the device name just named, then switch to "all channel, the live view will show up right away.
- There are four functions available: Live screen shoot, Live video record, video playback, video download.
- Can also watch saved video or photo.

### ⚠ Caution

- Live view will be delay because of the network data transmission.
- Video playback can only be use if date is still on the SD card, if the data has been rewrite, then will not able to be find/download.
- Please disconnect the WiFi after use, otherwise might not able to use internet on your device.
- If there is not HUD as option, please use PC and mobile device once every month to keep system run normally.