

Mobile surveillance

www.vacron.com.tw

馥鴻科技股份有限公司
FUHO Technology
CO., LTD.

Mobile surveillance

全方位移動影音監控系統

馥鴻科技股份有限公司
FUHO Technology
CO., LTD.

We offer
total solutions
in
surveillance
system



Fleets tracking system



Taxi surveillance



Transport tracking system



Yacht surveillance



Police car surveillance



Motorbike surveillance

English



繁體中文



• Motorbike Application



for Motorbike

**1CH 1080P
Mobile DVR for Motorbike**

VVG-MDE56

- 1 channel input, micro mobile DVR for motorcycle. Record audio by OBD with microphone (optional).
- Built-in supercapacitor
- Built-in WiFi
- OBD(GPS/MIC)optional



for Motorbike

**1CH 1080P
Mobile DVR for Motorbike**

VVG-MDE08FH

- Small independent system, 1 channels video.Record audio by OBD with microphone (optional).
- Built-in supercapacitor
- Built-in WiFi
- OBD(GPS/MIC)optional



for Motorbike

**2CH 720P
Mobile DVR for Motorbike**

VVG-MDE08B

- Small independent system, 2 channels video.Record audio by OBD with microphone (optional).
- Built-in supercapacitor
- Built-in WiFi
- OBD(GPS/MIC)optional



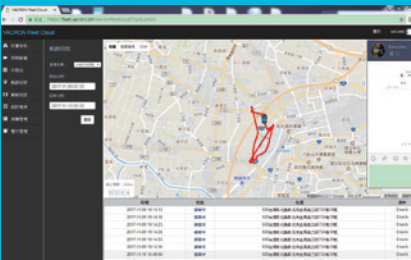
for Motorbike

**2CH 1080P
Mobile DVR for Motorbike**

VWH-MDE31B

- Aluminum casing make it durable and waterproof.
- Small independent system, 2 channels video and 1 channel audio recording.
- 1080P video resolution.
- Build-in WiFi connection for mobile phone application to display, playback and backup file directly.

- External USB WiFi dongle
Through APP for live view / playback and download.
- Support APP
 1. APP Support: iOS / Android.
 2. External USB WiFi dongle · through APP for live view / playback and download.



• Dashcam / Cloud application



BSMI CE FCC

720P Dashcam

VVG-CBN29

- Super capacitor for critical video well reserved.
- Wide angle glare-depressed lens.
- Low light high sensitive sensor equipped.
- HD Recording Resolution.



BSMI CE FCC

1080P Dashcam

VVG-CBE27A / VVG-CBE27AG

- Built-in megapixel Sony CMOS Sensor.
- Built-in supercapacitor offers extensional power supply and ensures video is well stored of critical moment and compact.
- 130° Wide angle 6G+IR glare-depressed lens.
- Recorded Video store in Micro SD card.
- GPS / G-Sensor.



BSMI CE FCC

1080P Dashcam

VVG-CBN05A

- Built-in megapixel Sony CMOS Sensor.
- Built-in supercapacitor.
- 130° Wide angle 6G+IR glare-depressed lens.
- Recorded Video store in SD card.
- 3" Hi-Res.TFT Monitor for live viewing or playback.
- GPS / Google-Map / G-Sensor.



VCCI BSMI CE FCC

1080P+720P Dashcam

CDR-E07

- Built-in megapixel Sony CMOS Sensor.
- Built-in supercapacitor offers extensional power supply and ensures video is well stored of critical moment and compact.
- 130° Wide angle 6G+IR glare-depressed lens.
- Recorded Video store in Micro SD card.



BSMI CE FCC

1080P Dashcam + External Camera

VVG-CBN39 / VVG-CBN39G

- Built-in 1080P SONY CMOS Sensor. Viewing angle approx 100 degrees.
- External Camera 720P · Vertical angle 110 degrees(Depend on Cameras you choose)
- Built-in supercapacitor, keep the real moment when accident happened.



Mobile Cloud-Based Body Camera Solution

VVG-MDE55

- Built-in megapixel Sony CMOS Sensor.
- Built-in supercapacitor offers extensional power supply and ensures video is well stored of critical moment and compact.
- 130° Wide angle 6G+IR glare-depressed lens.
- Recorded Video store in Micro SD card.



Cable version Car Camcorder

VVG-CBE57

- 1080P resolution.
- Lens: 3.3mm.
- View Angle: 110° (Horizontal) / 140° (Diagonal) / 80° (vertical).
- Support Micro SD card 128GB.



• VG+GK Smart Dashcam Application



for vehicle

WiFi / Bluetooth 1ch 720P Smart Dashcam

VG01

- Sync Recording via Cloud & Machine
- Remote Playback via Smart Phone & Computer.
- Built-in supercapacitor, keep the real moment when accident happened.
- Built-in WiFi or Bluetooth.



for vehicle

WiFi / 3G+4G 1080P+720P 2CH Smart Dashcam

VG07

- Sync Recording via Cloud & Machine.
- Remote Playback via Smart Phone & Computer.
- Built-in supercapacitor, keep the real moment when accident happened.
- Built-in WiFi or 3G/4G.

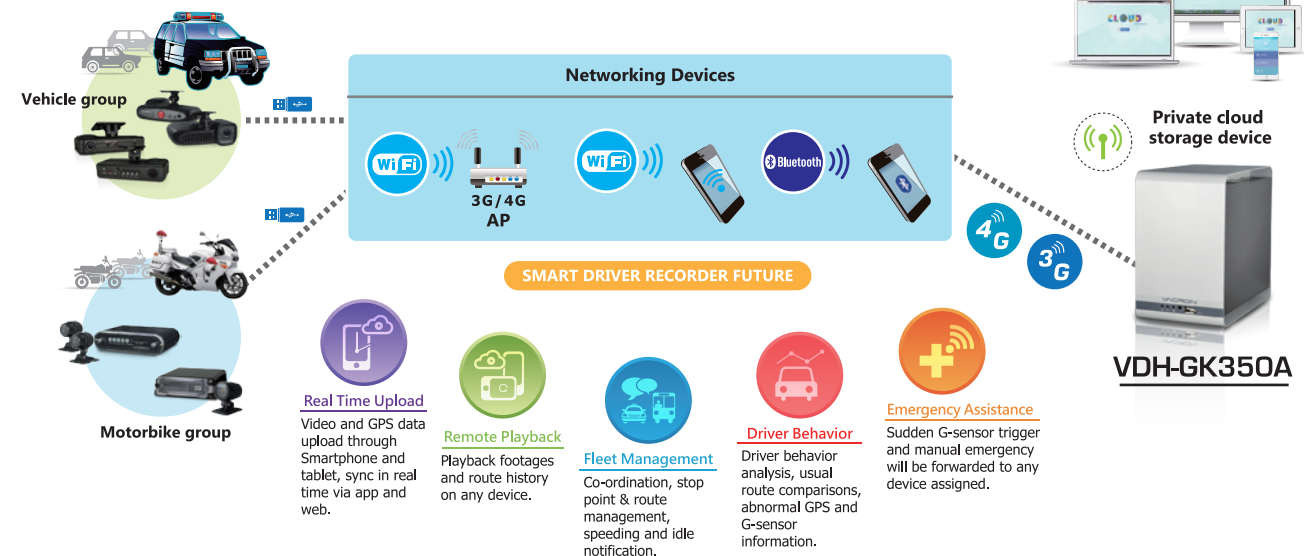


Private cloud storage device

Max to 20 devices / 160 CarBox Server

VDH-GK350A

- Capable receive signal from Max. 20 devices.
- Support 8TB SATA/SATA II HDD hard disk.
- Private video file not require to transmit through cloud or other server.
- Low price for small fleet management.



for Motorbike

WiFi / 3G+4G / 1080P 1CH Smart Driving Recorder

VG08A

- Sync Recording via Cloud & Machine
- Remote Playback via Smart Phone & Computer.
- Built-in supercapacitor, keep the real moment when accident happened.
- Built-in WiFi or 3G/4G.



for Motorbike

WiFi / 3G+4G / 720P+720P 2CH Smart Driving Recorder

VG08B

- Sync Recording via Cloud & Machine
- Remote Playback via Smart Phone & Computer.
- Built-in supercapacitor, keep the real moment when accident happened.
- Built-in WiFi or 3G/4G.



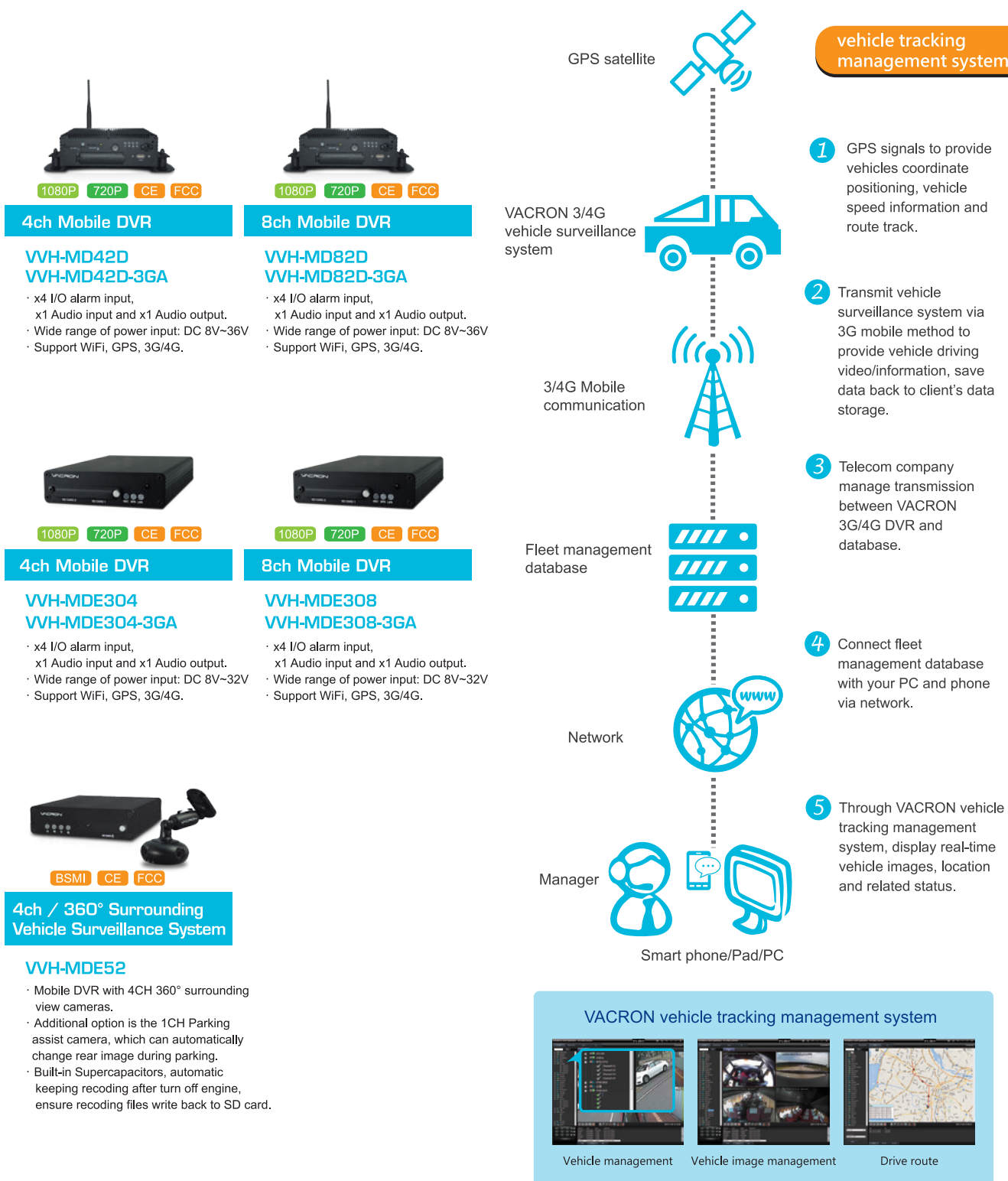
for Motorbike

WiFi / 3G+4G / 1080P+1080P 2CH Smart Driving Recorder

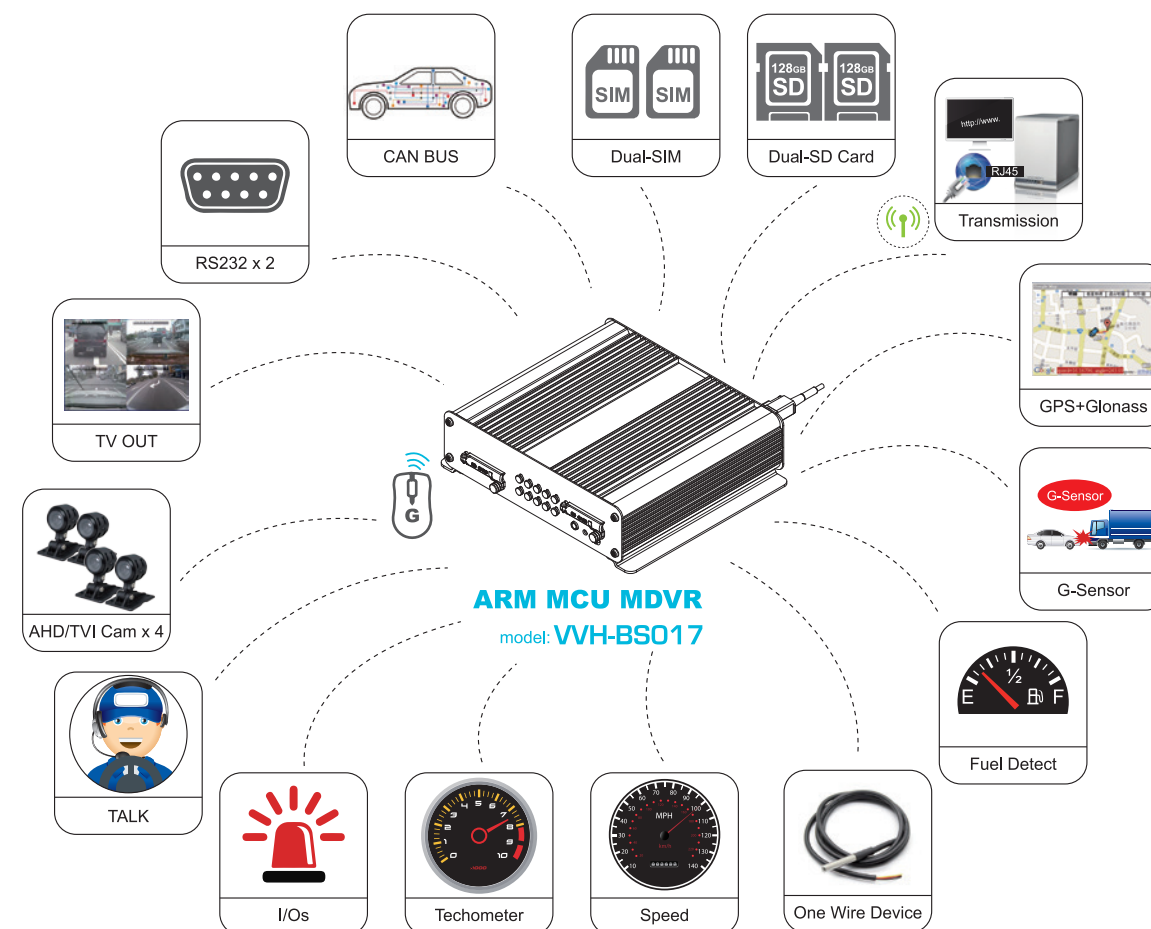
VG31B

- Sync Recording via Cloud & Machine.
- Remote Playback via Smart Phone & Computer.
- Built-in supercapacitor, keep the real moment when accident happened.
- Built-in WiFi or 3G/4G.

• MDVR Fleet Web Application



• VVH-BS017 System Application coming soon



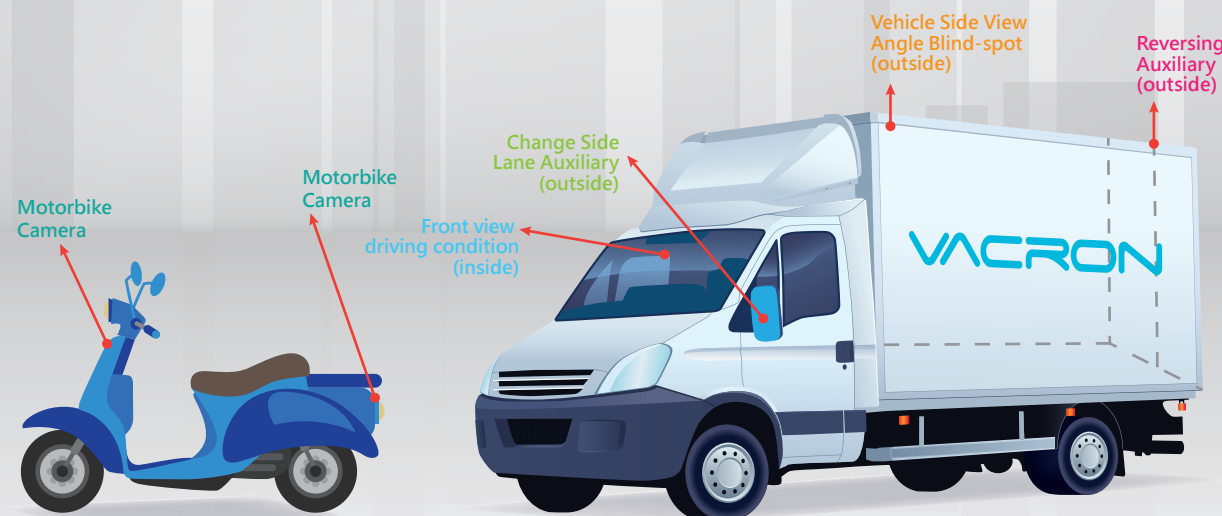
► Features

1. It is built-in ARM MCU for customer functions integration.
 - 1.1 It supported two Sim Cards to select which ISP is available.
 - 1.2 It supported RS232 x 2 interfaces for equipments connection such as RFID reader.
 - 1.3 It supported One Wire x 1 interface for equipments connection such as temperature meter.
 - 1.4 The GPS+GLONASS functions can works with internal backup battery for few days.
 - 1.5 It supported CAN bus connectivity.
 - 1.6 It supported I/Os connective applications such as door, brake, light.
 - 1.7 It built-in G-Sensor for driver dangerous behaviors monitor.
 - 1.8 It supported SPEED, TECHOMETER, FUEL detections.
2. It supported two SD Cards for video and audio recording.
3. The networking can be connected immediately when 3G/4G signal available.
4. The 3GAppClient software can be supported for real time monitors.
5. It supported real time talking over air between Driver and 3GAppClient software.

• 1080P-720P-960H Camera

- In line with vscc vehicle safety testing.
- Comprehensive monitoring of external & internal at car.
- Video adjustable for mirroring if in need.
- Waterproof and dustproof level.
- Made in Taiwan.

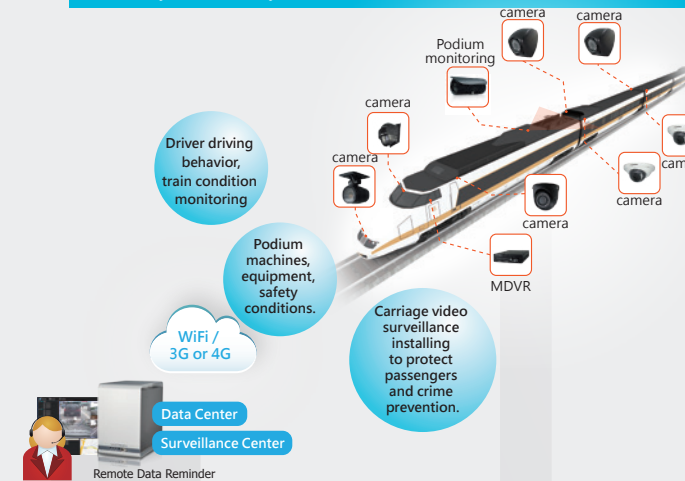
Change Side Lane Auxiliary (outside)		720P AVM-H237B 960H AVM-H237A		1080P AVM-S225C 720P AVM-S225B 720P AVM-H225B 960H AVM-H225A
Front view driving condition (inside)	S-TYPE 	1080P AVM-S250C 720P AVM-S250B 720P AVM-H250B 960H AVM-H250A	L-TYPE 	1080P AVM-S250C 720P AVM-S250B 720P AVM-H250B 960H AVM-H250A
Reversing Auxiliary (outside)		1080P AVM-S231C 720P AVM-S231B 720P AVM-H231B 960H AVM-H231A		1080P AVM-S252C 720P AVM-S252B 720P AVM-H252B 960H AVM-H252A
Vehicle Side View Angle Blind-spot (outside)		1080P VCN-5926HD5 720P VCN-5926HD5B 960H VCN-5926HD5A		720P AVM-H265B 960H AVM-H265A
Motorbike Camera		960H AVM-503AC		1080P AVM-F126C



• Success Stories

Railway case study

Location : Taiwan



► Project background:

At early stage, railway train video surveillance was constrained by technology and product costs and the focus was still on video surveillance and prevention issues. As the pantograph is the main equipment for railway operations, so generally used the single car image monitoring method, this caused the frequent occurrence of pantograph off and lead to pantograph failure as well as loss of power shut down situation. The broken tram line can also lead to fire hazards to the passenger safety and other major public safety, also cause the train can not pass though and train traffic safety issue.

► Application requirements:

For the solution of railway passenger car image integrated monitoring, in the future of new passenger train carriage, the head train carriage and poncho compartment video surveillance integrated solution, is based on the current high-definition network and intelligence. This will be taken into account for the future integrated train positioning, driver attendance, driver alcohol testing, train condition monitoring, etc, for the development of comprehensive monitoring.

► Solution:

1. The condition of driver's driving behavior and locomotive equipment and mechanical equipment.
2. Drivers monitor the carriage in real time and poncho equipment safety status.
3. Evidence recording and storage of various behavioral events.
4. Compatible 3g / 4g, reserve the system interface with traveler information.

Taxi solution case study

Location : Japan



► Project background:

The situation in the taxi market is complicated, industry management is very difficult. The rental industry faces many challenges: Security and supervision, driver and passengers' personal safety, illegal operation, illegal gathering. People and vehicles match: unable to catch the vehicle, driver detours, rejection of complaints. Operation management: Non-standard pricing, Savage service, refused to carry customers complaints Value adding services: The cost of system building is too high, how to get the ads. Resources to be inventory.

► Application requirements:

Vacron rental solution is for the urban transportation industry management features and provide an overall solution, combine security monitoring and industry services as a whole, to meet the rental management department to provide video surveillance, driver attendance, operational analysis, service quality evaluation requirement. The overall solution is to meet the requirements of direct installation and installation requirements of aftermarket. Platform also for management center, supervision of department and meet the difference of requirement.

► Solution:

1. Able to be docked with a variety of car sensors, limited supervision of the vehicle condition, analysis of passengers get on/off vehicle information, monitor driver driving behavior, prohibited any illegal transporting operation.
2. Improve overall service standards.
3. Improve road transporting business operation ordering, through the communication with the vehicle terminal, improve the driving load factor effectively.
4. Promoting the intelligence construction of urban traffic.

Original vehicle industry integration and application case study

Location : Taiwan



► Project background:

Vehicle integrated monitoring information system only realizes the evidence for the real-time tracking of the vehicle location, overspeeding, overload, etc activities intervention. With the development of technology and industry application, information system functions gradually enriched then developed the synthesis monitoring function for vehicle information and driving environment video surveillance as based and driving behavior surveillance and vehicle condition surveillance as supplemented.

► Application requirements:

Integrated Vehicle monitoring information products mainly by the combination of vehicle system platform with the information of car terminal device, car camera, emergency button, temperature sensor, and enterprise security operations management platform system. With this platform system mainly provides the details for vehicle location, image, alarm information, vehicle track, vehicle breakdown, power system status, energy consumption trend and other functions.

► Solution:

Open cooperation model—based on the standard of operating schedule arrangement, data supervision, information release, vehicle condition, location data and video surveillance and then customs can decide their interface style or function module to help partners have a personalized solution to seize the market opportunities.

Fleet Tracking Management System

Fleet web Fleet management platform in the operation of the support and services

Purpose: To focus on operational support and strategic cooperation between car and machine to assist the fleet system operator's system upgrade from GPS to GPS + Multimedia service, or to provide new industry with a high quality, fast and low operating cost option

Features:

Enhance video streaming, storage and instant notification of events

Car machine can easily be set for different service programs

Providing a wide range of easy-to-use APIs makes it easy to interface different systems

Provide substantive assistance to customers adopting a cloud platform (Amazon AWS, etc.)

Various functions customized.

Bus application



Key Products

4ch Mobile DVR

VVH-MD42D
VVH-MD42D-3GA

- x4 I/O alarm input, x1 Audio input and x1 Audio output.
- Wide range of power input: DC 8V~36V
- Support WiFi, GPS, 3G/4G.

1080P 720P CE FCC

Vehicle Camera

AVM-H250B

- Resolution: 1080P / 720P / 960H
- 3.6mm lens, view angle: 90°
- Suitable installed on windshield without waterproof.

IP66

Vehicle IR Camera

AVM-S282C

- Resolution: 1080P / 720P / 960H
- 12 IR LEDs, IR Range 15M.

IP66

Vehicle IR Camera

AVM-H265B

- Resolution: 720P / 960H
- 2.6mm lens, view angle: 90°
- 10 IR LEDs, IR Range 3M.

Vehicle Camera

AVM-H225B

- Resolution: 1080P / 720P / 960H
- 3.6 / 2.8 mm Lens

VSCC IP66

Vehicle IR Camera

AVM-H231B

- Resolution: 1080P / 720P / 960H
- 2.9mm lens, view angle: 90°
- 6 IR LEDs, IR Range 3M.

Front view driving condition



Front view driving condition



4ch MDVR



Vehicle Side View Angle Blind-spot



Reversing Auxiliary



Side Camera



• Police Car Application

► Solution

1. Improve police force's dispatch system with high speed.
2. Avoid illegal use on people.
3. Keep the crime's evidence.
4. Live view patrol monitoring.



4ch Police Car application



► Key Products



1080P 720P CE FCC

4ch Mobile DVR

VVH-MD42D
VVH-MD42D-3GA

- x4 I/O alarm input, x1 Audio input and x1 Audio output.
- Wide range of power input: DC 8V~36V
- Support WiFi, GPS, 3G/4G.



Suitable for slanting wind shield of vehicles, eg. Taxi cab, Police car, Van, Sedan, MPV, SUV, SUT, Recreation Vehicle.

VSCC

Vehicle Camera

AVM-H250B

- Resolution: 1080P / 720P / 960H
- 3.6mm lens, view angle: 90°
- Suitable installed on windshield without waterproof.



IP66

Vehicle Camera

VVH-H225B

- Resolution: 1080P / 720P / 960H
- 3.6mm lens, view angle: 90°
- 2.8mm lens, view angle: 110°



IP66

Vehicle Camera

AVM-H237B

- Resolution: 720P / 960H
- 2.9mm lens, view angle: 110°

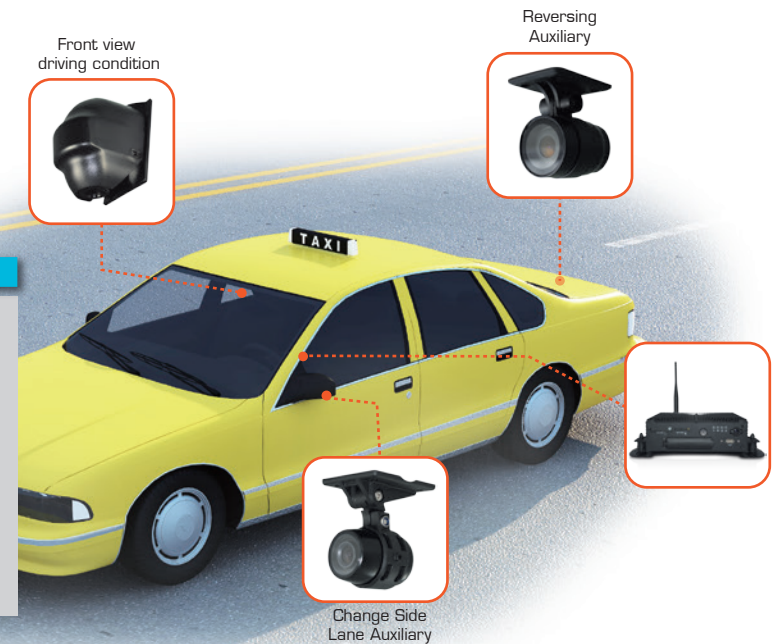
• Taxi Application

► Solution

1. Enhance the accuracy of delivery schedule and logistic dispatching
2. Route selection and modification for faster service.
3. Improve mobility of the vehicles
4. Reduce operating costs
5. Utilize all resources to maximize the effectiveness of the entire fleet.
6. Monitor the mechanical condition of the vehicles to reduce the mechanical failure.

► Improvement

1. Improved work efficiency and reduced operational costs.
2. Minimize human errors.
3. Drivers are more vigilant of surrounding and obey the traffic regulations.
4. Evidence collection in the event of car accident.
5. Driving behavior analysis.



4ch Taxi application



► Key Products



1080P 720P CE FCC

4ch Mobile DVR

VVH-MD42D
VVH-MD42D-3GA

- x4 I/O alarm input, x1 Audio input and x1 Audio output.
- Wide range of power input: DC 8V~36V
- Support WiFi, GPS, 3G/4G.



Suitable for slanting wind shield of vehicles, eg. Taxi cab, Police car, Van, Sedan, MPV, SUV, SUT, Recreation Vehicle.

VSCC

Vehicle Camera

AVM-H250B

- Resolution: 1080P / 720P / 960H
- 3.6mm lens, view angle: 90°
- Suitable installed on windshield without waterproof.



IP66

Vehicle Camera

AVM-H225B

- Resolution: 1080P / 720P / 960H
- 3.6mm lens, view angle: 90°
- 2.8mm lens, view angle: 110°



IP66

Vehicle Camera

AVM-H237B

- Resolution: 720P / 960H
- 2.9mm lens, view angle: 110°

• Garbage Truck Application

► Solution

1. Enhance the accuracy of delivery schedule and logistic dispatching
2. Route selection and modification for faster service.
3. Improve mobility of the vehicles
4. Reduce operating costs
5. Utilize all resources to maximize the effectiveness of the entire fleet.
6. Monitor the mechanical condition of the vehicles to reduce the mechanical failure.

► Improvement

1. Improved work efficiency and reduced operational costs.
2. Minimize human errors.
3. Drivers are more vigilant of surrounding and obey the traffic regulations.
4. Evidence collection in the event of car accident.
5. Driving behavior analysis.

4ch Rubbish Truck application



► Key Products



1080P 720P CE FCC

4ch Mobile DVR

VVH-MDE304
VVH-MDE304-3GA

- x4 I/O alarm input,
- x1 Audio input and x1 Audio output.
- Wide range of power input: DC 8V~32V
- Support WiFi, GPS, 3G/4G.



Suitable for upright wind shield of vehicles, eg. Truck, Bus, Pickup, Trailer

VSCC

Vehicle Camera

AVM-H250B-L

- Resolution: 1080P / 720P / 960H
- 3.6mm lens, view angle: 90°
- Suitable installed on windshield without waterproof.



IP66

Vehicle Camera

AVM-H225B

- Resolution: 1080P / 720P / 960H
- 3.6mm lens, view angle: 90°
- 2.8mm lens, view angle: 110°



IP66

Vehicle IR Camera

AVM-H282B

- Resolution: 1080P / 720P / 960H
- 12 IR LEDs, IR Range 15M.



VSCC IP66

Vehicle IR Camera

AVM-H231B

- Resolution: 1080P / 720P / 960H
- 2.9mm lens, view angle: 90°
- 6 IR LEDs, IR Range 3M.

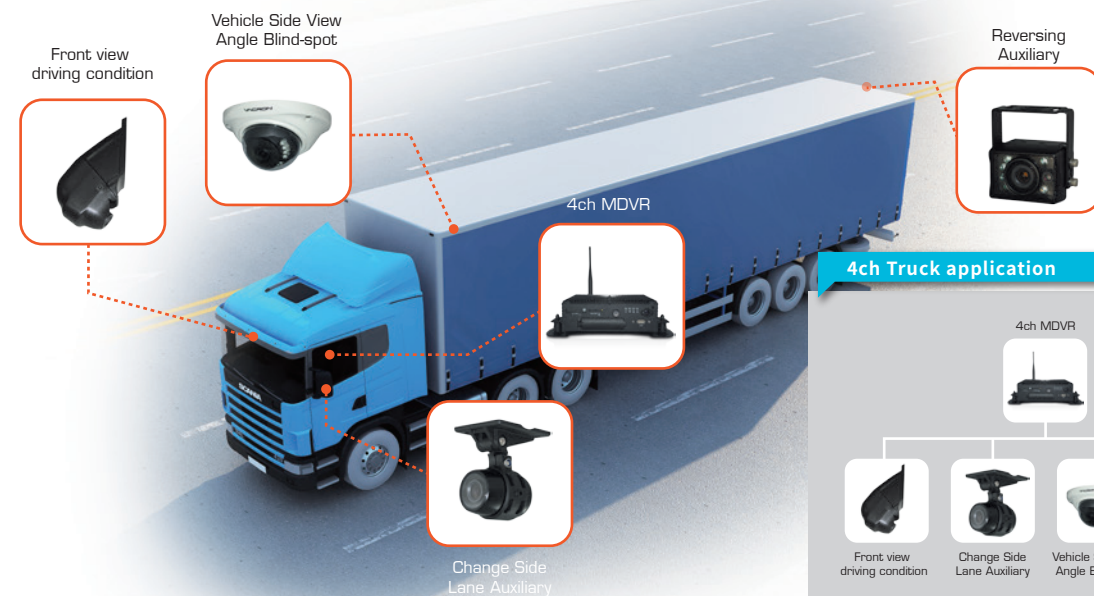
• Truck Application

► Solution

1. Enhance dispatch efficiency and transporting safety.
2. Delivery route optimization to reduce fuel consumption and accurate and on time delivery.
3. Control working progress and human management effectively by the device equipment transferring the data to the control center server, after indicating and integrating the driver's information, instructions, delivery road conditions and real time information to ensure safety and efficiency, improve fleet fuel economy and energy efficiency as well as reduce the cost of their logistic operations.

► Improvement

1. Ensure fleet management team and driver safety
2. Reduce fleet management team causation and accident rate and loss
3. Emergency notification and handling, improve the performance rate effectively, best working schedule combination, reduce the cost of the logistic operations.
4. driving behavior analysis and prevention.



4ch Truck application



► Key Products



1080P 720P CE FCC

4ch Mobile DVR

VVH-MD42D

- x4 I/O alarm input,
- x1 Audio input and x1 Audio output.
- Wide range of power input: DC 8V~36V
- Support WiFi, GPS, 3G/4G.



Suitable for upright wind shield of vehicles, eg. Truck, Bus, Pickup, Trailer

VSCC

Vehicle Camera

AVM-H250B-L

- Resolution: 1080P / 720P / 960H
- 3.6mm lens, view angle: 90°
- Suitable installed on windshield without waterproof.



IP66

Vehicle Camera

AVM-H225B

- Resolution: 1080P / 720P / 960H
- 3.6mm lens, view angle: 90°
- 2.8mm lens, view angle: 110°



IP66

Vehicle IR Camera

AVM-H282B

- Resolution: 1080P / 720P / 960H
- 12 IR LEDs, IR Range 15M.



VSCC IP66

Vehicle IR Camera

AVM-H231B

- Resolution: 1080P / 720P / 960H
- 2.9mm lens, view angle: 90°
- 6 IR LEDs, IR Range 3M.

Fleet Tracking Management System

8 CH Mobile DVR / 4G Application Management System

Integrated GPS, GSM, GIS technology into Vehicle tracking management system. Through internet transmitted technology, It's easy to track vehicle and coordinate the fleet. Mobile DVR received GPS data, then transmitted it to server database through 3G network, customers can retrieve the vehicle position and route through GIS platform. Combine the vehicle tracking system and the video file, the coordinator can double check between vehicle driving route and driving video. It will reduce manpower cost and increase management efficiency.

Train application



Satellite

Vehicle Positioning / Transmission

Fleet management database

Network

Manager

Smart phone/Pad/PC

Telecom company manage transmission between VACRON 3G/4G DVR and database.

Connect fleet management database with your PC and phone via network.

Through VACRON vehicle tracking management system, display real-time vehicle images, location and related status.

Key Products



VSCC CE FCC

4ch 720P Mobile DVR

VH-MD42D VH-MD42D-3GA

- Recording Frame: 720p/VGA@30FPS/CH
- x4 I/O alarm input,
- x1 Audio input and x1 Audio output.
- Wide range of power input: DC 8V~36V
- Support WiFi, GPS, 3G.
- IEC 60571 EMC
- IEC 60571 Vibration, shock and bump
- IEC 60571 Cold, Dry, Damp heat (Railway Certificate) E-MARK



64CH/128CH CMS

- Provides live monitoring up to 64/128 channels or video play back up to 4 channels.
- Digit Zoom
- Two way audio
- PTZ remote control
- Live view for rotation mode
- App on smart phone and tablet



Vehicle Camera

AVM-H205B

- Resolution: 1080P / 720P / 960H
- 3.6mm lens, view angle: 90°
- Suitable installed on windshield without waterproof.
- IEC 60571 Cold, Dry, Damp heat (Railway Certificate)



Vehicle IR Camera

AVM-H282B

- Resolution: 1080P / 720P / 960H
- 12 IR LEDs, IR Range 15M.



Vehicle Camera

AVM-1137C (AVM-H237B)

- Resolution: 720P / 960H
- 2.9mm lens, view angle: 110°
- IEC 60571 Cold, Dry, Damp heat (Railway Certificate)
- RN10(Salt Spray Test)



Vehicle IR Camera

VCN-5926HD5

- Resolution: 1080P / 720P / 960H
- 24 IR LEDs, IR Range 20M.
- 3.6 / 6.0 mm lens.



Vehicle IR Camera

AVM-H231B

- Resolution: 1080P / 720P / 960H
- 2.9mm lens, view angle: 90°
- 6 IR LEDs, IR Range 3M.



Vehicle IR Camera

AVM-H625B

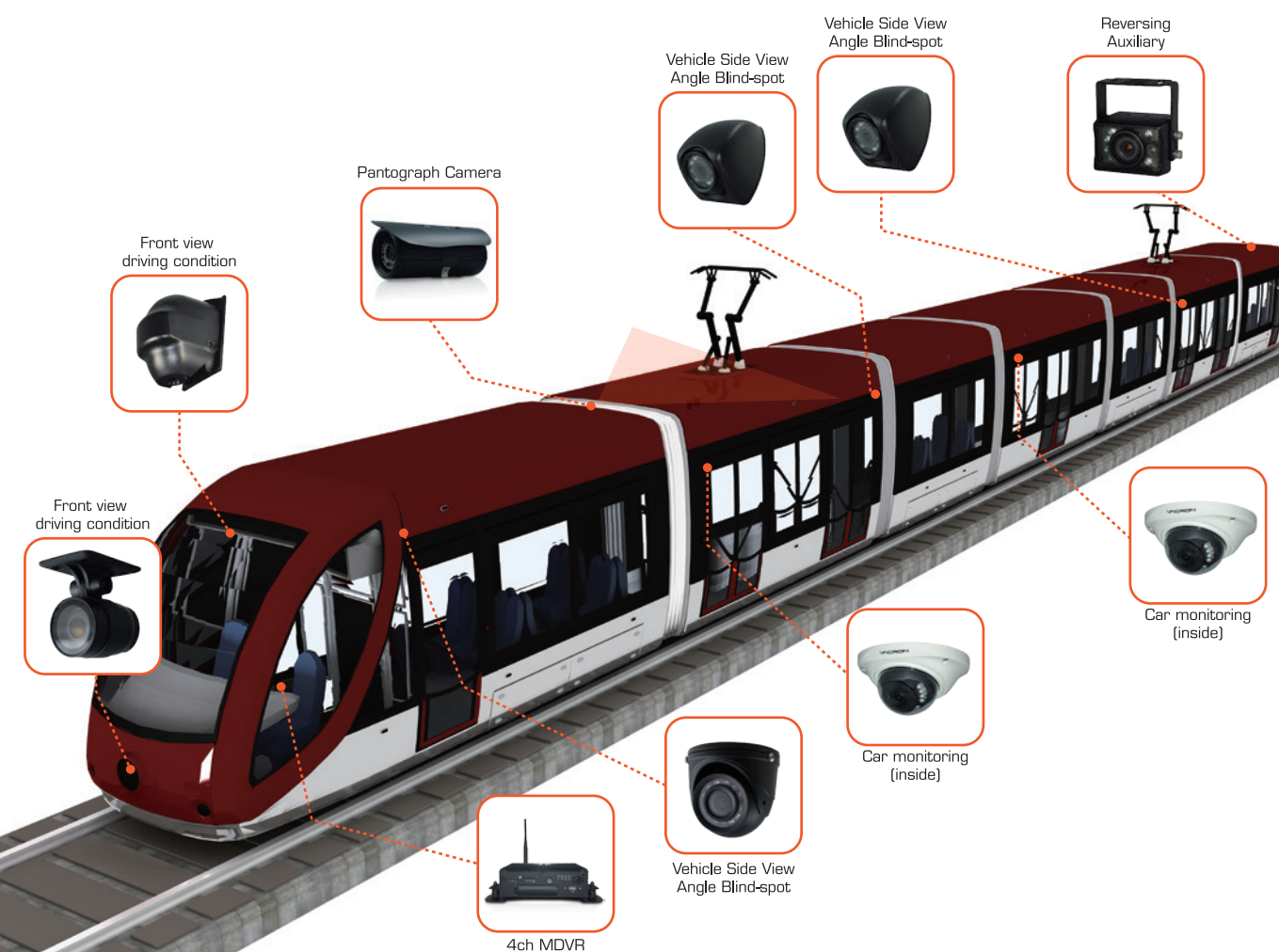
- Resolution: 720P / 960H
- 2.6mm lens, view angle: 90°
- 10 IR LEDs, IR Range 3M.



Vehicle IR Camera

US735VE

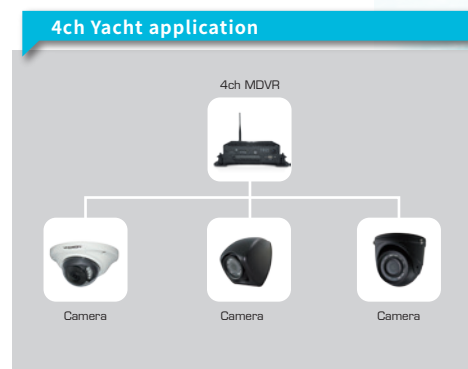
- Lightning breach protector, anti-lightning breakthrough, anti-high voltage induction.
- Support ONVIF international standard, best in compatibility and integration.
- Integrated protective cover structure is convenient for installation and stability of continuous signal transmission.
- Support Micro SD card recording.
- IEC 60571 EMC
- IEC 60571 Vibration, shock and bump
- IEC 60571 Cold, Dry, Damp heat (Railway Certificate)
- RN10(Salt Spray Test), IP66, IK10



• Yacht Application

► Solution

1. Mobile DVR Surveillance.
2. Reminder function.
3. 4G LTE Live Streaming Video for up to 4 – 8 cameras.
4. Route recorder.
5. Mobile App – iPhone and Android.
6. Real-Time Web-Based Data.
7. Remote Playback Capable.



► Key Products



1080P 720P CE FCC

4ch Mobile DVR

VVH-MD42D
VVH-MD42D-3GA

- x4 I/O alarm input, x1 Audio input and x1 Audio output.
- Wide range of power input: DC 8V~36V
- Support WiFi, GPS, 3G/4G.



IP66

Vehicle IR Camera

VCN-5926HD5

- Resolution: 1080P / 720P / 960H
- 24 IR LEDs, IR Range 20M.
- 3.6 / 6.0 mm lens.



IP66

Vehicle IR Camera

AVM-H265B

- Resolution: 720P / 960H
- 2.6mm lens, view angle: 90°
- 10 IR LEDs, IR Range 3M.



IP66

Vehicle IR Camera

AVM-H282B

- Resolution: 1080P / 720P / 960H
- 12 IR LEDs, IR Range 15M.



64CH/128CH CMS

- Provides live monitoring up to 64/128 channels or video play back up to 4 channels.
- Digit Zoom
- Two way audio
- PTZ remote control
- Live view for rotation mode
- App on smart phone and tablet